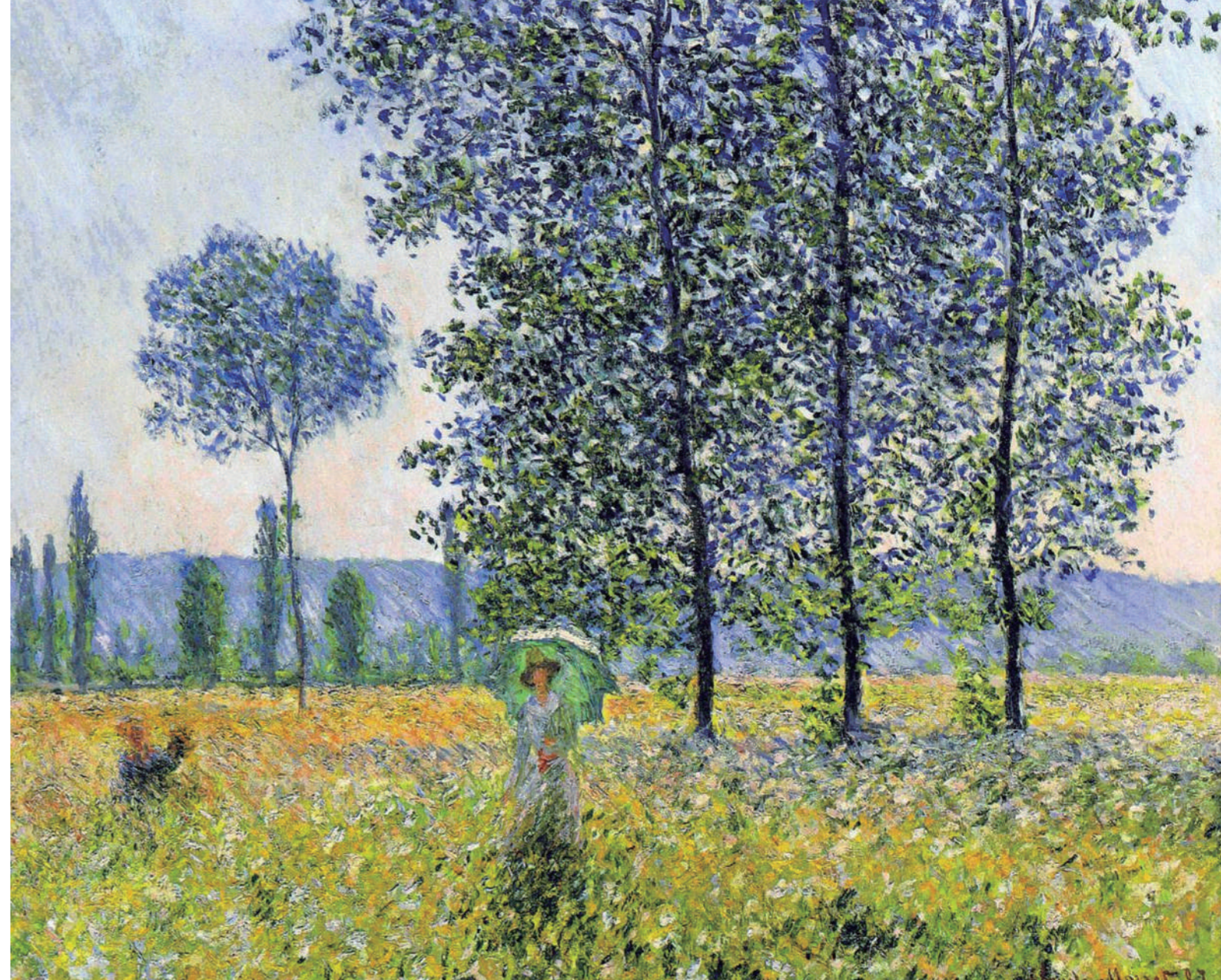


**GENOSS**  
For Patients & Doctors



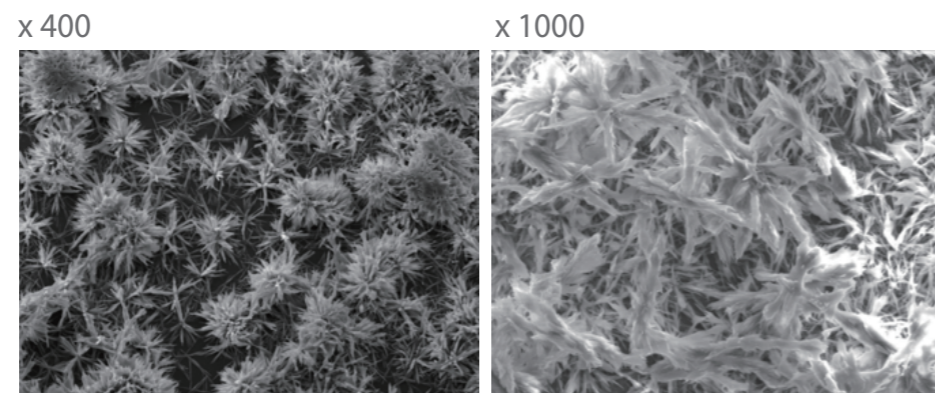
**GENOSS™**  
**DCB** Paclitaxel Coated PTCA Balloon Catheter



# GENOSS™ DCB Paclitaxel Coated PTCA Balloon Catheter

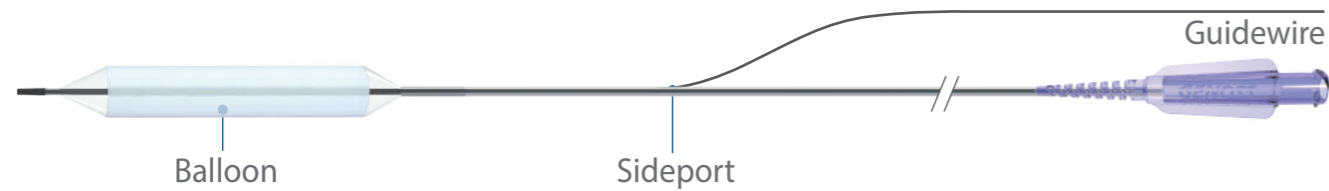
- Crystalline Paclitaxel of 3µg/mm<sup>2</sup> coating with shellac
- Homogeneous coating with 10µm in thickness
- Advanced deliverability of catheter due to lower profile

## Crystalline Paclitaxel



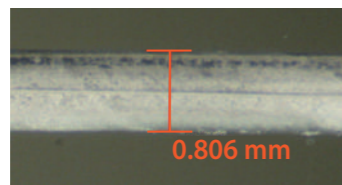
## Lower Profile

GENOSS DCB

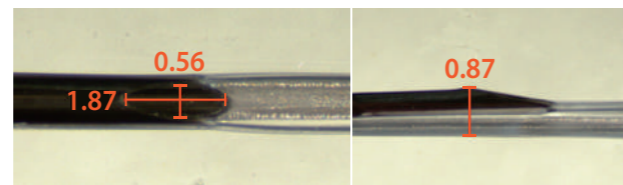


GENOSS DCB

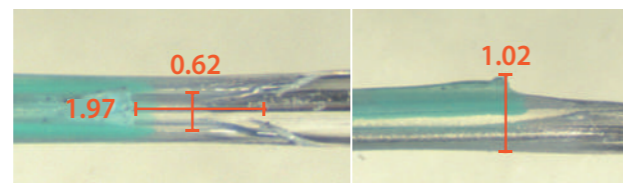
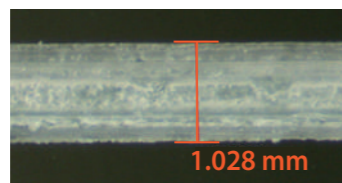
Balloon Profile



Sideport Profile



Company A



## Serial Quantitative Coronary Angiographic Results at 6 months<sup>1)</sup>

	Genoss DCB (n = 39)	Company A (n = 39)	p Value
Diameter Stenosis in-segment, %	<b>23.5 ± 10.9</b>	30.4 ± 11.2	0.020
Diameter Stenosis in-stent, %	<b>23.5 ± 10.9</b>	30.2 ± 10.8	0.022
Late lumen loss in-segment, mm	<b>0.15 ± 0.43</b>	0.24 ± 0.39	0.299
Late lumen loss in-stent, mm	<b>0.15 ± 0.43</b>	0.26 ± 0.36	0.201
Binary restenosis in-segment, %	<b>0</b>	2(6.5)	0.164
Binary restenosis rate in-stent, %	<b>0</b>	1(3.2)	0.329

Values are mean ± SD or n/N (%).

## Clinical Follow-Up at 6 months<sup>2)</sup>

	Genoss DCB (n = 39)	Company A (n = 39)
Major adverse cardiovascular events	<b>3 (7.7)</b>	4 (10.3)
Cardiac death	<b>0</b>	0
Myocardial infarction	<b>1 (2.6)</b>	1 (2.6)
Stent thrombosis	<b>0</b>	1 (2.6)
Target lesion revascularization	<b>2 (5.1)</b>	2 (5.1)
Target vessel revascularization	<b>2 (5.1)</b>	2 (5.1)

Values are n (%)