

A Small Venetian Canal, 1895
by Eugène Boudin



**Catheter,
Intravascular,
Embolectomy/
thrombectomy,
Central Circulation
Extractor™**

Extractor™

Aspiration Catheter



High performance of aspiration capacity

· It uniformly extracts through large lumen diameters

Hydrophilic coating(40cm)

· This coating enhances trackability and smooth navigation in tortuous anatomy

Dual working lengths

· It has standard working length of 140cm (6Fr & 7Fr) and special working length of 150cm (8Fr)

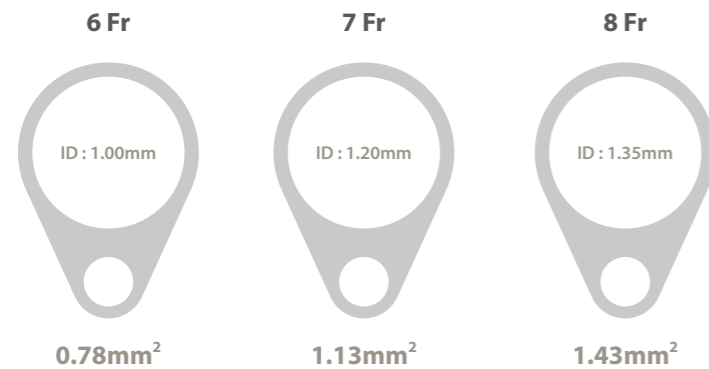
Useful depth markers

· These markers are positioned at 90cm-100cm-110cm from distal tip for measuring depth

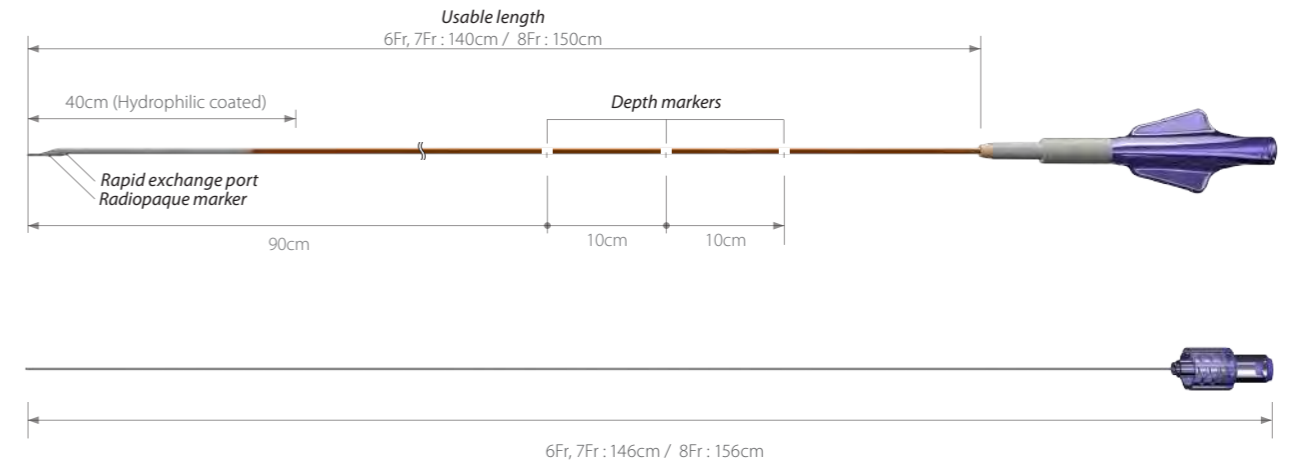
Filter basket

· The filter size of 180µm enables high-speed blood filtering

Extraction area



Dimension



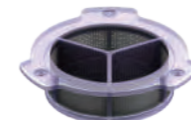
Package



1-Way stop cock/extension line : 1ea



Lock syringe : 1ea

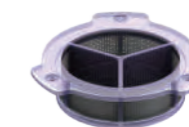


Filter basket 180µm : 1ea

Accessories



Lock syringe : 1ea



Filter basket 180µm : 1ea

Order information

Model No.	Minimum inner diameter of compatible GC	Compatible GW	Shaft diameter				Guidewire lumen part		Usable length
			Outer		Inner		Maximum outer diameter	Length	
			Distal	Proximal	Distal	Proximal			
6Fr GAC-6-110	0.070 inch (1.78mm)	0.014 inch (0.36mm)	3.9Fr (1.30mm)	3.9Fr (1.30mm)	3.0Fr (1.00mm)	3.3Fr (1.10mm)	5.1Fr (1.70mm)	10mm	1400mm
7Fr GAC-7-130	0.080 inch (2.03mm)	0.014 inch (0.36mm)	4.5Fr (1.50mm)	4.5Fr (1.50mm)	3.6Fr (1.20mm)	3.9Fr (1.30mm)	5.7Fr (1.90mm)	10mm	1400mm
8Fr GAC-8-150	0.089 inch (2.26mm)	0.014 inch (0.36mm)	5.2Fr (1.74mm)	5.2Fr (1.74mm)	4.1Fr (1.35mm)	4.5Fr (1.50mm)	6.3Fr (2.10mm)	10mm	1500mm