



MISHA VET

Orthopedic &
Spinal Implants &
Instruments

"Premum, Non Nocere!"
"First, Do Not Harm!"



www.mishavet.com

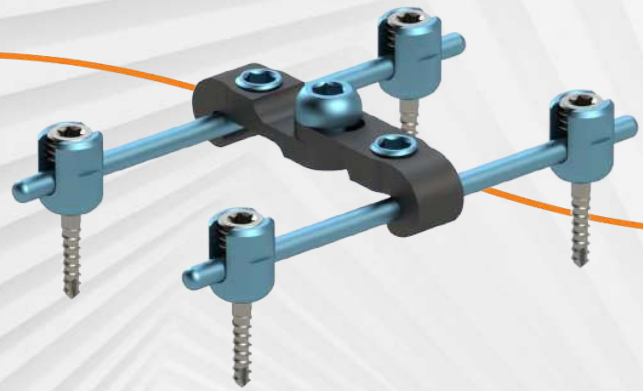
Introduction

The background features a 3D rendering of a dog's skull in the upper right, with a brown surgical plate secured by blue screws. In the lower right, a dog's paw is shown with a purple surgical implant being installed using a silver screwdriver. The background is a white, curved, ribbed structure that creates a tunnel-like effect.

MishaVet as a veterinary trauma and spinal products company is committed to maintaining the highest ethical, quality and compliance standards while meeting our customers' demands for surgical products;

- **Easy-to-use Solutions**
- **Enhanced Support**
- **Excellent Outcome**

Overview



MishaVet is committed to providing customers with excellent quality products and superior customer service.

Our company conducts business in an open and honest manner and rejects business practices that unnecessarily increase the cost of health treatment.

MishaVet's products fulfill the requirement of ISO 13485. Our Quality Management System carries out all the necessary follow-ups at all levels of our products.

MishaVet's products have been placed in quality on domestic and international markets.

MishaVet's veterinary products that provide comprehensive medical solutions to help veterinarians treat patients successfully. Our products portfolio includes technically advanced implants and instruments:

- **100% Titanium(Ti6Al4V Grade 5) Plates and Screws**
- **Sturdy Screwdriver bits are made of quality stainless steel**
- **Carefully engineered sets, implants and instruments**

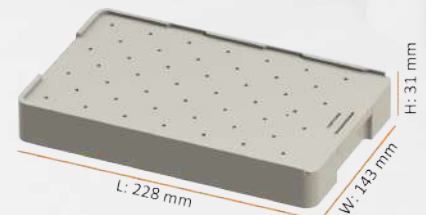
Our company regularly trains appropriate Team Members on its legal and ethical obligations and MishaVet's policies and procedures related to marketing and promotional activities related to MishaVet's products. We regularly review and update our training programs as needed.

MACY Mini Set 01

Macy Mini Set Features



- ❖ Especially created for breed dogs and cats, but not limited to
- ❖ Pre-contoured anatomical design
- ❖ Locking($\text{\O}1.9\&\text{\O}2.0\text{mm}$) and Non Locking Cortical Screws($\text{\O}2.0\text{mm}$)
- ❖ Plate thickness 1.2 - 2.0 mm
- ❖ Variable locking T plate up to $\pm 12^\circ$
- ❖ Minimally invasive plate osteosynthesis (MIPO) plate option
- ❖ Titanium Alloy(Ti6Al4V, Gr.5) material, same with human material and process
- ❖ Left & right plate variation for anatomical match
- ❖ Limited contact shape for better osteointegration
- ❖ Different colored products for easy separation&usage
- ❖ Various plate shapes
- ❖ Portable, only 1,40 kg, with dimensions: 228x143x31 mm



01 MACY Mini Set

Macy Mini Set Implants



Code	Description	Hole/Size (Ea)/(mm)	Width (mm)	Thickness (mm)	Length (mm)	Qty in Set (EA)
MMP0100	Acetabular Plate 4 Holes	4	3	1,2	26	1
MMP0206	LC Combihole Plate 6 Holes 1,5 mm	6	5,5	1,5	45	1
MMP0207	LC Combihole Plate 7 Holes 1,5 mm	7	5,5	1,5	52	1
MMP0208	LC Combihole Plate 8 Holes 1,5 mm	8	5,5	1,5	59	1
MMP0209	LC Combihole Plate 9 Holes 1,5 mm	9	5,5	1,5	66	1
MMP0210	LC Combihole Plate 10 Holes 1,5 mm	10	5,5	1,5	73	1
MMP0301	L Plate, Right 5 Holes	5	4	1,2	34	1
MMP0302	L Plate, Left 5 Holes	5	4	1,2	34	1
MMP0401	Supracondylar Short Plate, Right, 5 Holes	5	6	1,8	37	1
MMP0402	Supracondylar Short Plate, Left, 5 Holes	5	6	1,8	37	1
MMP0501	Supracondylar Long Plate, Right, 10 Holes	10	6	1,8	62,5	1
MMP0502	Supracondylar Long Plate, Left, 10 Holes	10	6	1,8	62,5	1
MMP0600	T Plate 4 Holes 1,2 mm	6	5,7	1,2	34,5	1
MMP0704	Reconstruction Plate 4 Holes 1mm	4	4,9	1	22,5	1
MMP0705	Reconstruction Plate 5 Holes 1mm	5	4,9	1	28,5	1
MMP0706	Reconstruction Plate 6 Holes 1mm	6	4,9	1	35	1
MMP0707	Reconstruction Plate 7 Holes 1mm	7	4,9	1	40,5	1
MMP0720	Reconstruction Cuttable Plate 20 Holes 1mm	20	4,9	1	118,5	1
MMP0804	Reconstruction Plate 4 Holes 1,5mm	4	4,9	1,5	22,5	1
MMP0805	Reconstruction Plate 5 Holes 1,5mm	5	4,9	1,5	28,5	1
MMP0806	Reconstruction Plate 6 Holes 1,5mm	6	4,9	1,5	35	1
MMP0807	Reconstruction Plate 7 Holes 1,5mm	7	4,9	1,5	40,5	1
MMP0820	Reconstruction Cuttable Plate 20 Holes 1,5mm	20	4,9	1,5	118,5	1
MMP0910	MIPO Plate 10 Holes	10	6	2	66	1
MMP0912	MIPO Plate 12 Holes	12	6	2	78	1
MMP0914	MIPO Plate 14 Holes	14	6	2	90	1
MMP1007	Straight Plate 7 Holes 1,2mm	7	5	1,2	41,5	1
MMP1008	Straight Plate 8 Holes 1,2mm	8	5	1,2	47	1
MMP1107	Straight Plate 7 Holes 1,5mm	7	5	1,5	41,5	1
MMP1108	Straight Plate 8 Holes 1,5mm	8	5	1,5	47	1
MMP1200	T Combihole Plate 6 Holes 1,5 mm	6	6	1,5	67	1

MACY Mini Set 01

Macy Mini Set Screws and Instruments



Code	Description	Hole/Size (Ea)/(mm)	Qty in Set (EA)
MSL1906	Locking Cortical Screw 1,9 x 6 mm	6	10
MSL1908	Locking Cortical Screw 1,9 x 8 mm	8	10
MSL1910	Locking Cortical Screw 1,9 x 10 mm	10	10
MSL1912	Locking Cortical Screw 1,9 x 12 mm	12	10
MSL1914	Locking Cortical Screw 1,9 x 14 mm	14	10
MSL1916	Locking Cortical Screw 1,9 x 16 mm	16	10
MSL1918	Locking Cortical Screw 1,9 x 18 mm	18	10
MSL1920	Locking Cortical Screw 1,9 x 20 mm	20	10
MSL2006	Locking Cortical Screw 2,0 x 6 mm	6	10
MSL2008	Locking Cortical Screw 2,0 x 8 mm	8	10
MSL2010	Locking Cortical Screw 2,0 x 10 mm	10	10
MSL2012	Locking Cortical Screw 2,0 x 12 mm	12	10
MSL2014	Locking Cortical Screw 2,0 x 14 mm	14	10
MSL2016	Locking Cortical Screw 2,0 x 16 mm	16	10
MSL2018	Locking Cortical Screw 2,0 x 18 mm	18	10
MSL2020	Locking Cortical Screw 2,0 x 20 mm	20	10
MSN2006	Non-Locking Cortical Screw 2,0 x 6 mm	6	10
MSN2008	Non-Locking Cortical Screw 2,0 x 8 mm	8	10
MSN2010	Non-Locking Cortical Screw 2,0 x 10 mm	10	10
MSN2012	Non-Locking Cortical Screw 2,0 x 12 mm	12	10
MSN2014	Non-Locking Cortical Screw 2,0 x 14 mm	14	10
MSN2016	Non-Locking Cortical Screw 2,0 x 16 mm	16	10
MSN2018	Non-Locking Cortical Screw 2,0 x 18 mm	18	10
MSN2020	Non-Locking Cortical Screw 2,0 x 20 mm	20	10
MTL0106	Screw Driver with Handle	T6 TORX	2
MTL0108	Screw Driver with Handle	T8 TORX	2
MTL0219	Drill Guide	For Ø1,9 Screw	1
MTL0220	Drill Guide	For Ø2,0 Screw	1
MTL0315	Drill Bit	Ø1,5	2
MMC0000	Container	228x143x31	1

01 MACY Mini Set

Acetabular Plate



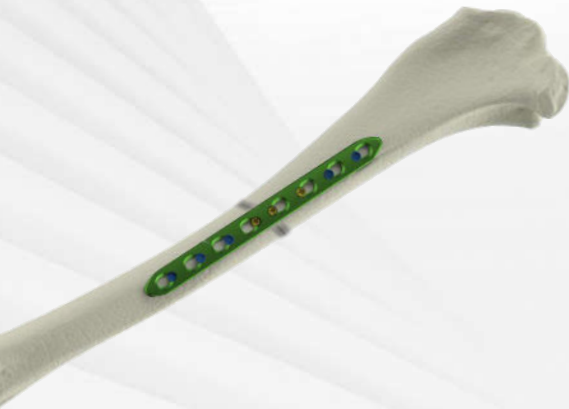
- ❖ For use with Ø1.9 mm locking cortical screws
- ❖ Fully anatomically designed for acetabular fractures
- ❖ 4-hole, thickness: 1,2mm, length: 26mm



MACY Mini Set 01

LC Combi-hole Plate

- ❖ For use with Ø2.0 mm both locking&non locking cortical screws
- ❖ Offers the possibility of using two screws side by side
- ❖ Fully anatomically designed for humerus, femur, tibia, radius etc. fractures
- ❖ Offers an angled locking technology
- ❖ Requires special LCP hole
- ❖ Offers Dynamic Compression
- ❖ (6, 7, 8, 9, 10)-hole, thickness:1,5mm, length: (45, 52, 59, 66, 73)mm



01 MACY Mini Set

L Plate



- ❖ For use with $\varnothing 1.9$ locking and $\varnothing 2.0$ non locking cortical screws
- ❖ Fully anatomically designed for distal femur, distal radius etc. fractures
- ❖ Thin and anatomical design matches with the bone surface
- ❖ 5-hole, thickness: 1,2mm, length: 34mm

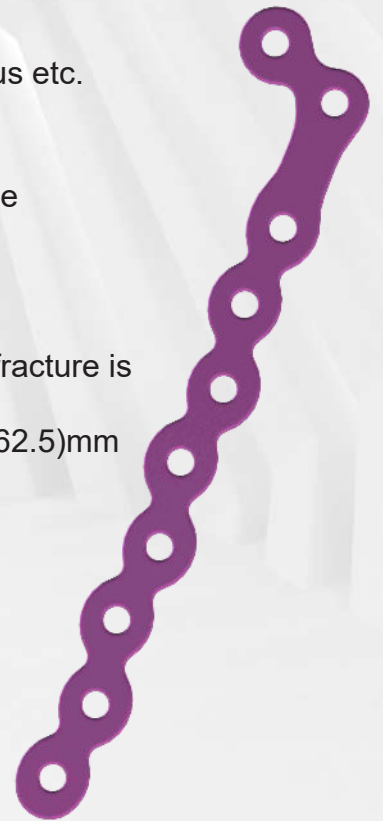


MACY Mini Set 01

Supracondylar Short/Long Plate L/R



- ❖ For use with Ø1.9 mm locking cortical screws
- ❖ Fully anatomically designed for distal femur, distal radius etc. fractures
- ❖ Allows at least two locking screws to be inserted into the condylar in the distal fragment
- ❖ With its long or short options, it is designed with a solution-oriented approach, no matter how difficult the fracture is
- ❖ (5, 10)-hole, Right/Left, thickness: 1,8mm, length: (37, 62.5)mm

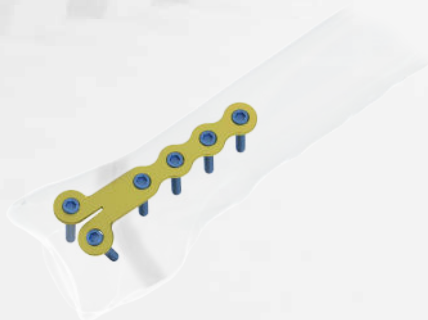


01 MACY Mini Set

T Plate



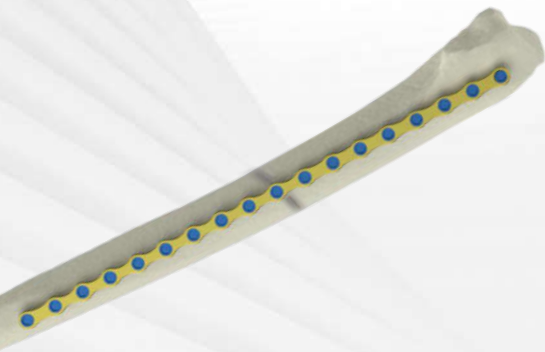
- ❖ For use with $\varnothing 1.9$ mm locking cortical screws
- ❖ Fully anatomically designed for distal radius etc. fractures
- ❖ Easily bendable head matches the bone
- ❖ 4-hole, thickness: 1,2mm, length: 34,5mm



MACY Mini Set 01

Reconstruction/Reconstruction Cuttable Plate

- ❖ For use with Ø2.0 mm locking cortical screws
- ❖ Offers excellent solutions in hip fractures,
- ❖ It has versatile usage possibilities such as femur, radius, humerus, tibia radius/ulna fractures, jaw fractures, scapular fractures
- ❖ Cuttable plate provides easy anatomical forming, and it can be cutted easily
- ❖ (4, 5, 6, 7, 20)-hole, thickness: 1,0/1,5mm, length: (22.5, 28.5, 35, 40.5, 118.5)mm

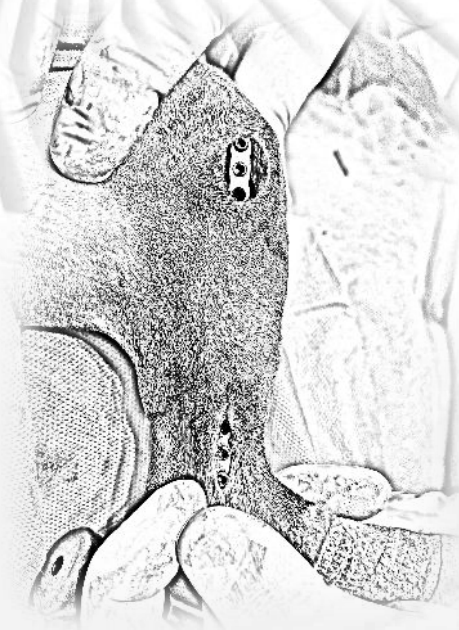


01 MACY Mini Set

MIPO Plate



- ❖ For use with Ø2.0 locking cortical screws
- ❖ Especially designed for long bone fractures; femur, medial tibia in cats and dogs
- ❖ Suitable for minimally invasive applications
- ❖ (10, 12, 14)-hole, thickness: 2,0mm, length: (66, 78, 90)mm



MACY Mini Set 01

Straight Plate

- ❖ For use with Ø2.0 locking and Ø2.0 non locking cortical screws
- ❖ The rigid design strengthens fractured surface of the bone, femur, humerus, radius/ulna, tibia etc.
- ❖ Fully anatomically designed for distal femur, distal radius etc. fractures
- ❖ (7, 8)-hole, thickness: 1,2/1,5mm, length: (41.5, 47)mm



O1MACY Mini Set

T Combi-hole Plate



- ❖ For use with Ø1.9 mm locking and Ø2.0 non locking cortical screws
- ❖ Especially designed for rarely proximal and distal long bones humerus fractures, especially distal radius fractures union and problematic fractures in small dogs
- ❖ Offers special LC plate for distal radius fractures
- ❖ Offers dynamic compression
- ❖ 6-hole, thickness: 1,5mm, length: 67mm



MACY Mini Set 01

Locking & Non Locking Cortical Screws

- **Ø1.9 mm Locking Cortical Screw**

- ❖ For use with Acetabular, LC Combi-hole, T, Supracondylar, L Plates
- ❖ In order to straighten the driving, T6 Torx System is used
- ❖ For best locking of the plate, double pitch and angled head is used
- ❖ Length: (6, 8, 10, 12, 14, 16, 18, 20)mm

- **Ø2.0 Locking/Non Locking Cortical Screw**

- ❖ For with Reconstruction, T Combi-hole, MIPO, Straight Plates
- ❖ In order to straighten the driving, T8 Torx System is used
- ❖ For best locking of the plate, double pitch and angled head is used
- ❖ Spherical design in the head of non locking screws fulfil
- ❖ Length: (6, 8, 10, 12, 14, 16, 18, 20)mm



Surgical Motors 08

NOW WITH 3000 MAH SONY LITHIUM ION BATTERIES

NO OTHER SURGICAL MOTOR BRANDS HAVE 3000 Mah CAPACITY LITHIUM BATTERIES.

Reliable and High Performance with Japanese Makita Technology Inside. Low Noise and vibration level Cannulated Drill High speed: ≤ 1.350 rpm Oscillating Saw Speed: ≤ 16.000 cpm Voltage: AC220V/50Hz Sensitive trigger with High speed drilling, Low speed drilling, screw driving and tapping. Torque limiting for screw driving. Warranty: Motors with 1-year and lion batteries with 3-month warranty.



Host part

Parameter Category		No-Load speed	Frequency	Maximum Torque	5 Minutes Temperature	Noise
		rpm	Hz	N.m	°C	dB
BSF-SD	Bone drill	0-1350		≥ 3	≤ 25	≤ 75
	Reamer drill	0-300		≥ 3	≤ 25	≤ 75
	Oscillating Saw		0-16000		≤ 25	≤ 75
BSF-SD	AO Drill	0-1350		≥ 3	≤ 25	≤ 75
	Reamer	0-300		≥ 3	≤ 25	≤ 75
BSF-SS	Sternum Saw	0-16000	0-16000		≤ 25	≤ 75

Batter & Charger

Host	Voltage,	5.76 V Q ~ 17.28V
	power	$\geq 150W$
Charger	Input voltage	100V ~ 240V
	Input power	50Hz ~ 60Hz
	Input current,	0.5A (max)
	Output voltage,	7.2V ~ 14.4V
	Output current	1.0A (max)
Battery	Voltage	5.76V ~ 17.28V
	Charging time	$\approx 1H$
	Discharge time / 1A	≥ 30 min

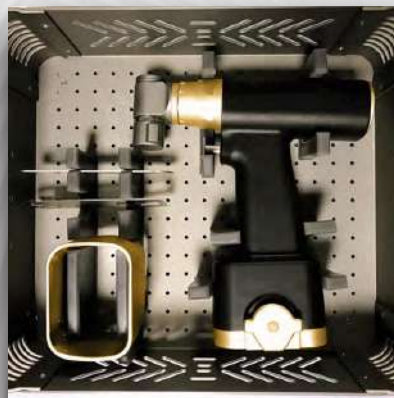
08 Surgical Motors

S SERIES CANNULATED SURGICAL DRILL SET



- ❖ One cannulated drill unit
- ❖ One lithium ion charger
- ❖ Two 3000 Mah Lithium ion batteries
- ❖ Two aseptic battery transfer rings
- ❖ One drill chuck and key
- ❖ One Aluminium case

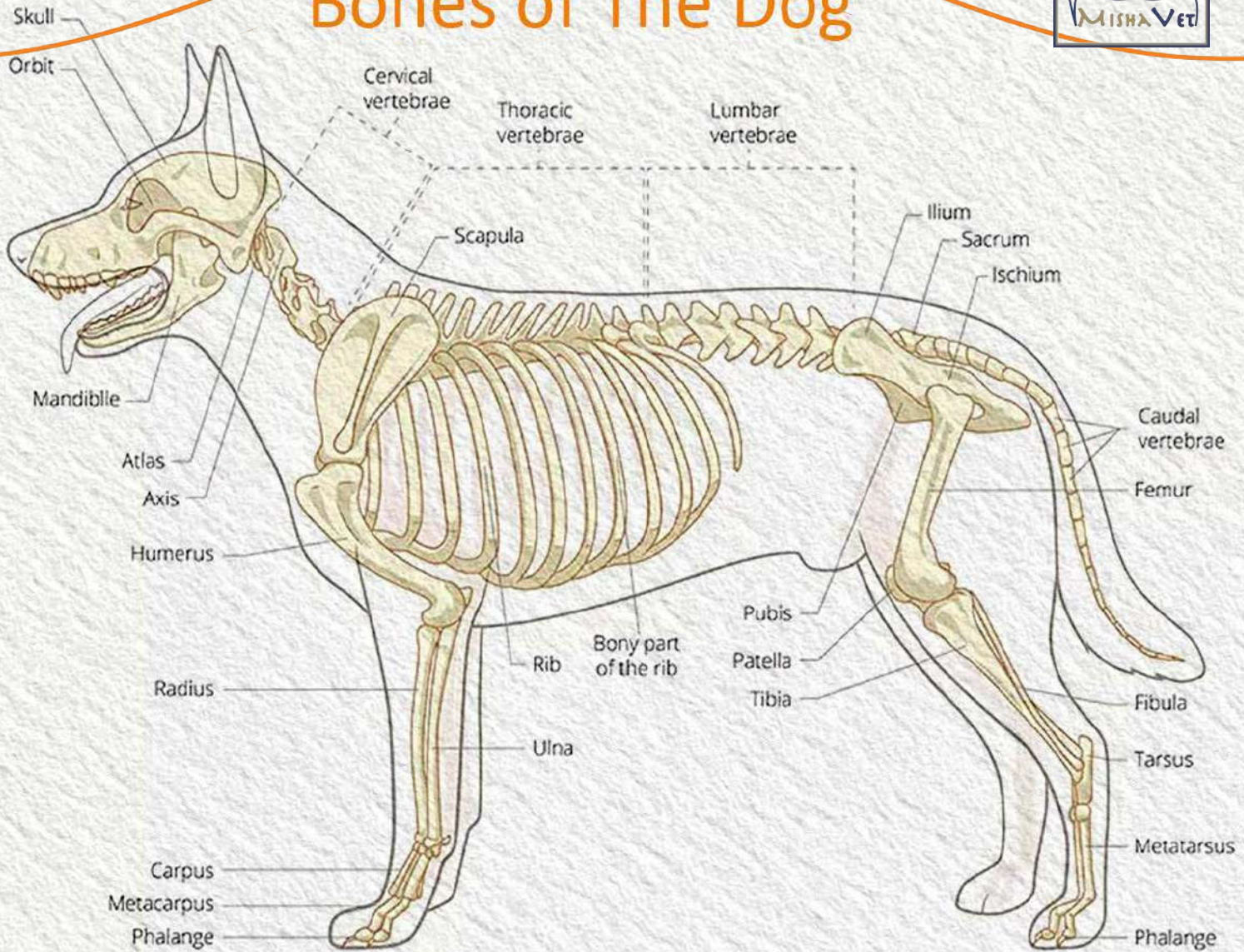
S SERIES SURGICAL SAW SET



- ❖ One saw unit
- ❖ One charger
- ❖ Two 3000 Mah Lithium ion batteries
- ❖ Two aseptic battery transfer rings
- ❖ Four saw blades
- ❖ One Aluminium case

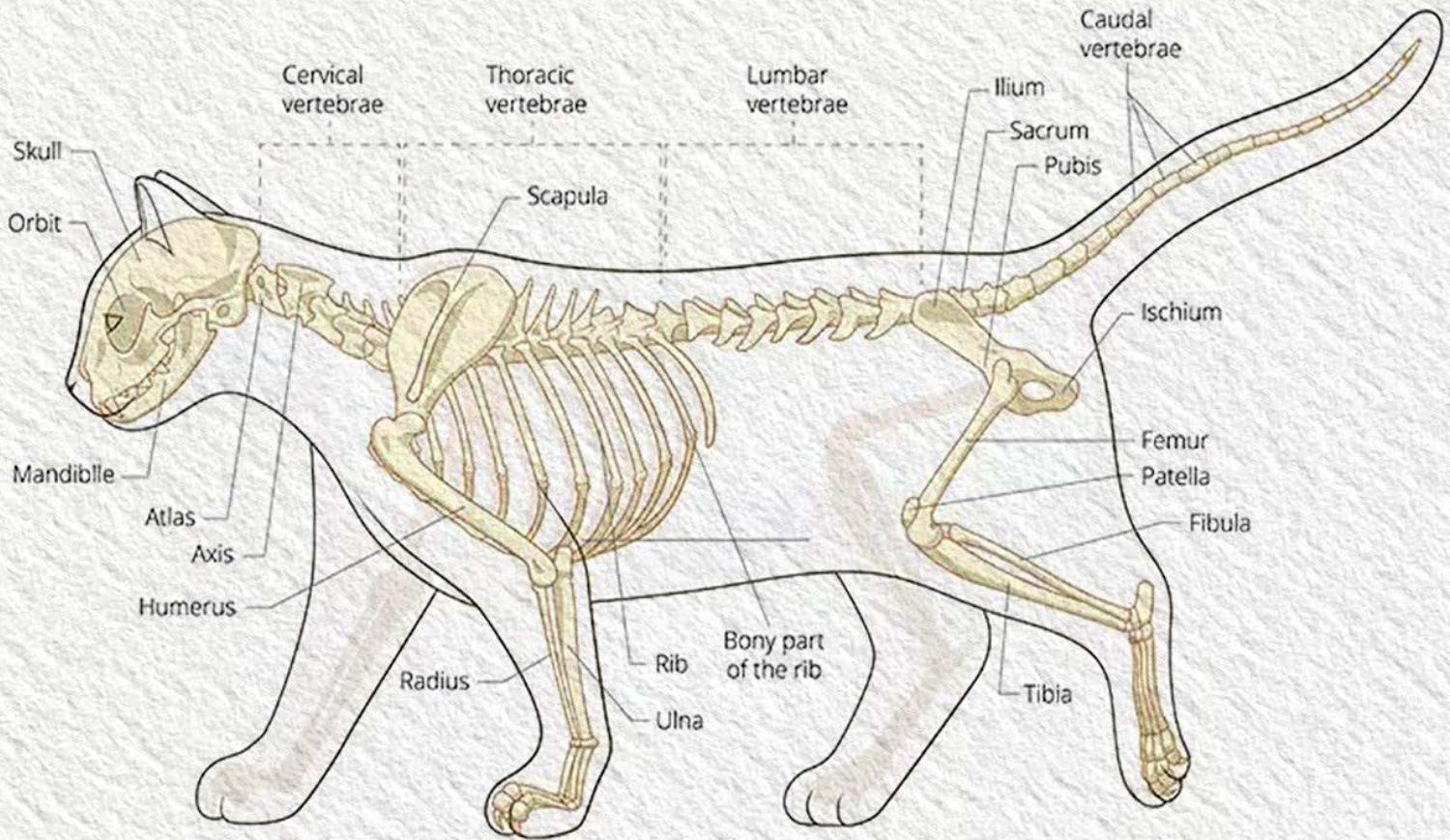


Bones of The Dog



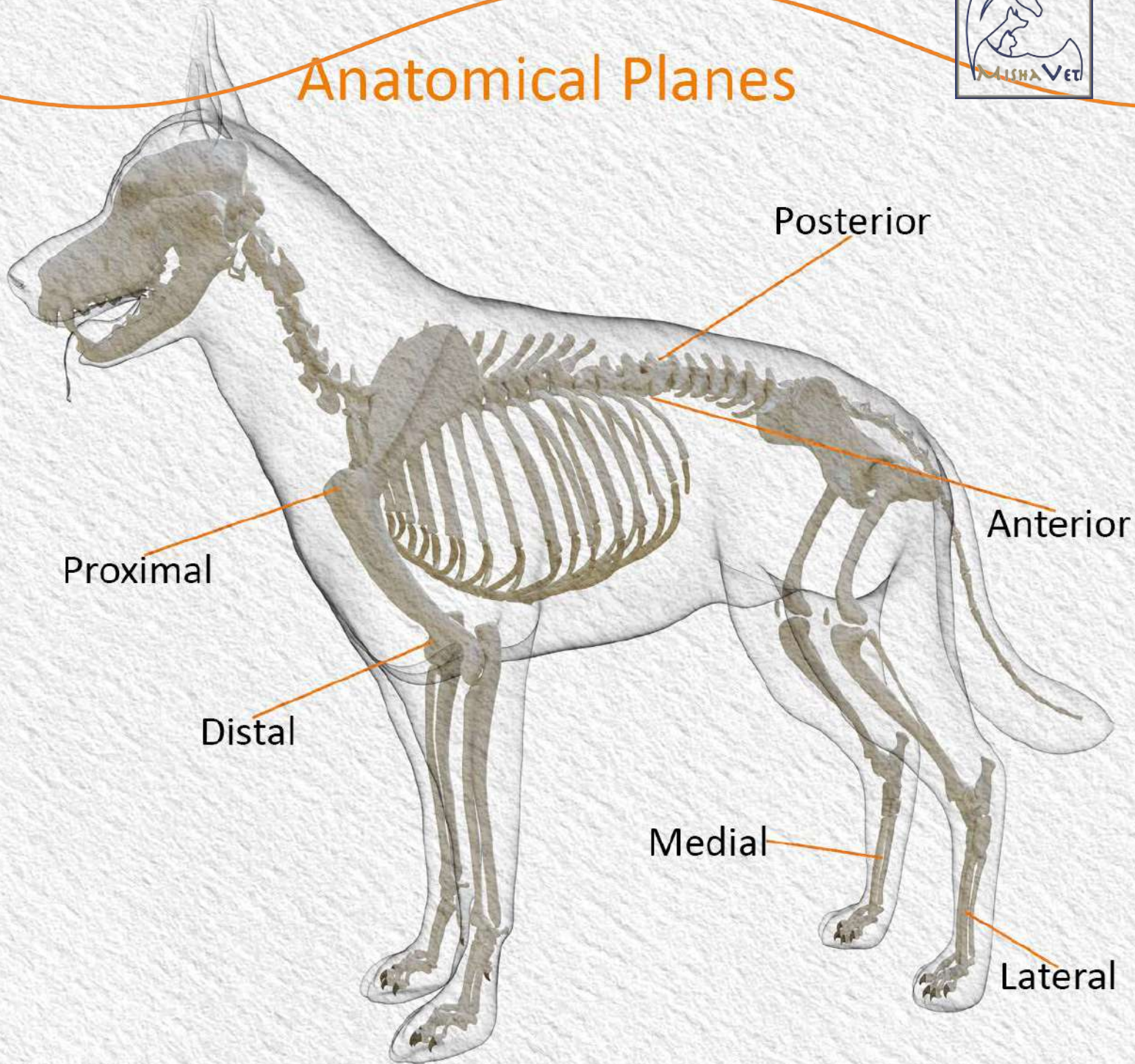


Bones of The Cat





Anatomical Planes





Who we are

We have nearly 40-year of combined experience in machining, and insight for the production of our medical products to treat a variety of injuries and conditons in medical sector. We fulfill the requirements of ISO 13485 and manufacturing of medical implants (Veterinary Spine&Trauma Solutions).

Our goal

Our main goal is to do our best to satisfy every customer who benefits of our products and services. We aim to do that by providing them timely, useful, and the best solutions.

info@mishavet.com
www.mishavet.com



Exclusive Distributor
Contactenos

WELLGO S. DE R.L. DE C.V.
Insurgentes Sur 2453
Torre Murano Piso. 6, Oficina. 6087
Tizapán San Ángel
Teléfono: 55 8014 8107, 55 5470 0857
Correo: ventas@wellgomexico.com
www.wellgomexico.com