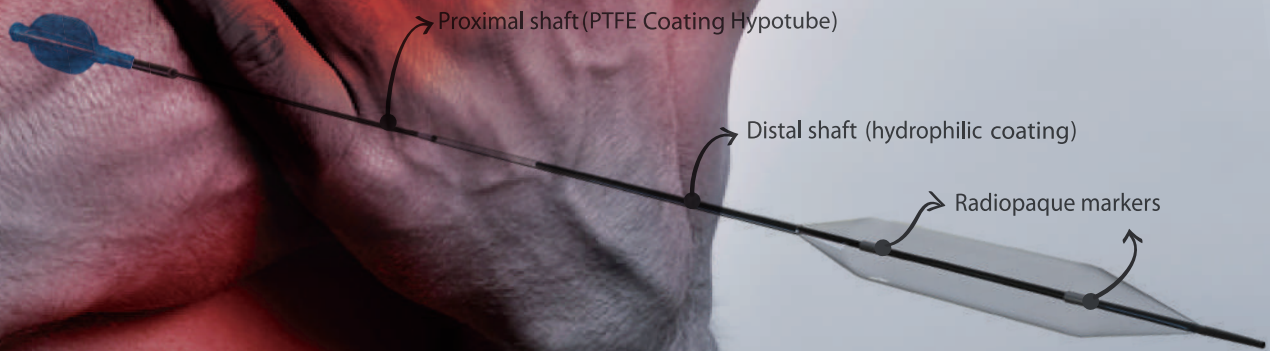


# GENOSS™

## PTCA Balloon Catheter

- New hydrophilic coating
- Specially engineered 3-folded balloon
- Compliance profile
- Less dog boning
- Smooth cross tip
- Wide choice

Distal Shaft	2.6F
Proximal Shaft	2.0F
Soft-tip lesion entry profile	0.017"
Nominal Pressure	7 ATM(1.25mm~1.50mm) 8 ATM(2.00mm~4.00mm)
Rated Burst Pressure	16 ATM(1.25mm~4.00mm)

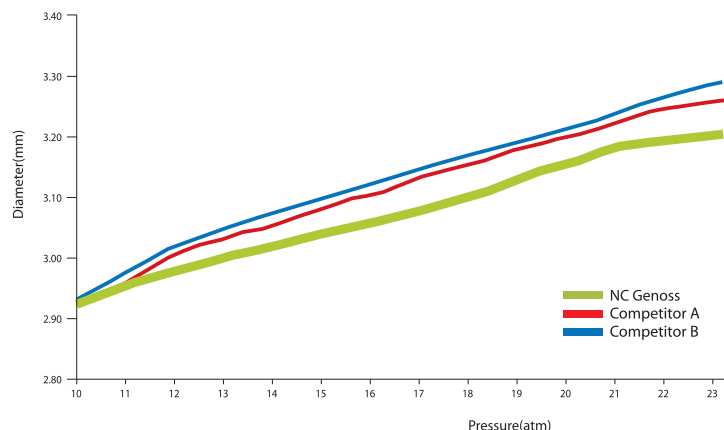


# NC GENOSS™

## PTCA Balloon Catheter

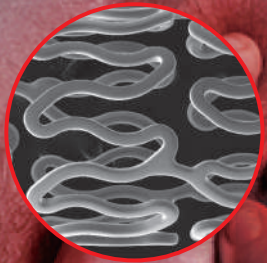
### Compliance Profile, 3.00 X 20mm

Nominal Pressure : 14atm  
Rated Burst Pressure : 20atm  
Balloon material : Non-compliant balloon  
Folding : 3-folds  
Min. Guiding catheter ID : 5Fr(0.056")  
Max. Guide wire OD : 0.014"(0.36mm)  
Catheter type : Rapid Exchange  
Proximal shaft : 2.0Fr(0.67mm)  
Distal shaft : 2.6Fr(0.87mm)  
Lesion entry profile : 0.017"(0.43mm)  
Usable length : 1420mm  
Shelf life : 2 years from sterilization date



**GENOSS™**

# BMS Bare Metal Coronary Stent



Co-Cr Alloy  
Optimal thickness  
High radial force  
Low profile delivery catheter system  
Good visibility in angiography  
Wide choice

## High flexibility

- Open-cell design offers great flexibility in complex lesions and helps you easy navigate in tortuous anatomy
- Superior deliverability without compromise in complex anatomy

**GENOSS™**

# DES Sirolimus Eluting Coronary Stent System

## Characteristics

- Thin strut of cobalt chromium alloy
- Abluminal bioresorbable polymer
- Improved flexibility
- High radial force
- Low profile delivery catheter system
- New hydrophilic coating

## Sirolimus Release Profile

