

# Navidian

Steerable Epidural Catheter

# Navidian

Steerable Epidural Catheter

## Typical Indications

- A Chronic Back Pain
- B Post-Laminectomy Syndrome
- C Spinal Stenosis
- D Herniated Nucleus Pulposus

## Advantages

- Low risk therapy
- Minimally invasive
- No general anesthetic
- High success rates
- No scar formation
- No open surgery
- Relatively short hospital stay
- Quick recovery
- Repeatable at any time
- Also ideal for patients who have undergone previous surgery
- Targeted treatment of causes

## Contraindications

- Lack of Patient's consent
- Patient with inflammation adjacent to the targeted treatment of causes
- Patient with inflammation in the bloodstream
- Patient with Hemorrhagic diathesis
- Patient with hypovolemia
- Patient who takes the bleeding disorder(coagulopathy) or anticoagulant medication (E.g. Warfarin·Aspirin·Plavix )

# Navidian

## Steerable Epidural Catheter

"Epidural Catheter Technique", this proven method has been used to decompress spinal nerves without open surgery and lastingly alleviate the pain associated with acute and chronic spine disorders. Navidian which is a sort of Epidural Catheter Systems for the fore-said proven Method has the control handle to steer and ideally target with precision through the spinal canal for precise treatment of pathology.

### Features

- Radiopaque & soft aromatic Shaft
- Steerable Aromatic distal tip
- Easy to handle
- Easy to steer precisely
- No need to withdrawn the stylet to inject the medication

treatment of pathology.

### Navidian

#### A. E-Catheter



#### B. Bone Marrow Needle



E-Catheter		Needle	
whole Length	OD	Gauge	Length
300.0	1.6	15	91.2

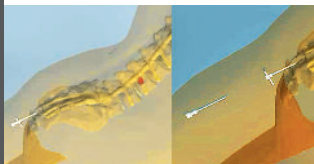
<Unit : mm,Tolerance: ± 5%>

## Surgical Steps



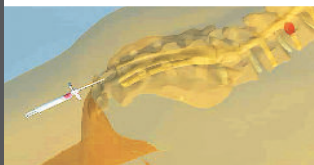
### 1st STEP

No General Anesthetic But Local Anesthetic.



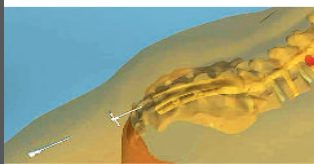
### 2nd STEP

Insert an epidural needle(15 Gauge) through Hiatus to make a small hole to be the pathway with guide only for the catheter. Then, take out the stylet leaving the introducer & needle in the hiatus.



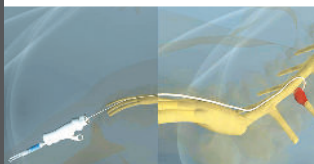
### 3rd STEP

Inject the contrast medium to see whether or not the epidural needle is well placed.



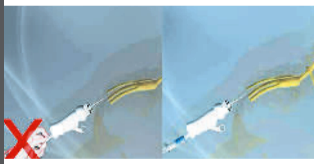
### 4th STEP

Take out the needle leaving introducer in the hiatus.



### 5th STEP

Insert the catheter from the introducer to the targeted treatment.



### 6th STEP

Inject the mixed medicine into the catheter through the infusion port for the targeted injections.



### 7th STEP

Take out catheter & introducer.