



MISHA VET

Orthopedic &
Spinal Implants &
Instruments

"Premum, Non Nocere!"
"First, Do Not Harm!"



www.mishavet.com

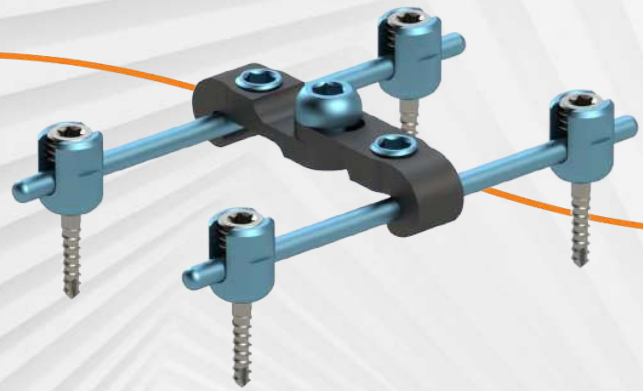
Introduction

The background features a 3D rendering of a dog's skull in the upper right, with a brown surgical plate secured by blue screws. In the lower right, a dog's paw is shown with a purple surgical implant being secured by a yellow screw using a silver screwdriver. The background is a white, curved, ribbed structure that creates a tunnel-like effect.

MishaVet as a veterinary trauma and spinal products company is committed to maintaining the highest ethical, quality and compliance standards while meeting our customers' demands for surgical products;

- **Easy-to-use Solutions**
- **Enhanced Support**
- **Excellent Outcome**

Overview



MishaVet is committed to providing customers with excellent quality products and superior customer service.

Our company conducts business in an open and honest manner and rejects business practices that unnecessarily increase the cost of health treatment.

MishaVet's products fulfill the requirement of ISO 13485. Our Quality Management System carries out all the necessary follow-ups at all levels of our products.

MishaVet's products have been placed in quality on domestic and international markets.

MishaVet's veterinary products that provide comprehensive medical solutions to help veterinarians treat patients successfully. Our products portfolio includes technically advanced implants and instruments:

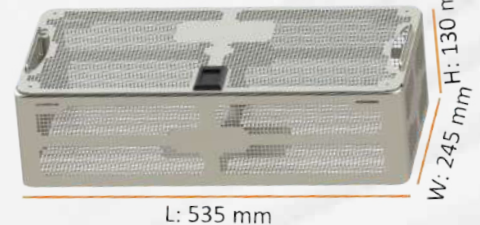
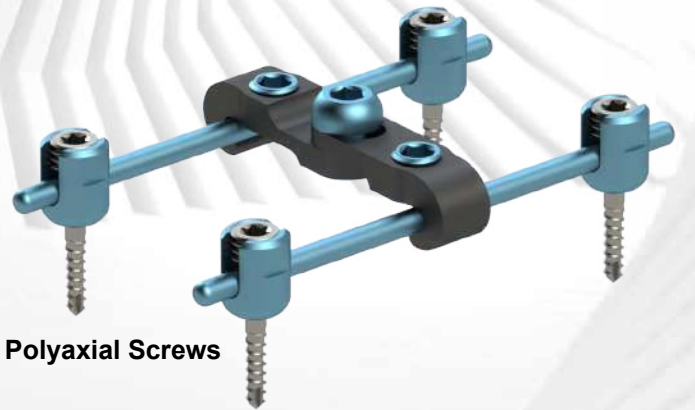
- **100% Titanium(Ti6Al4V Grade 5) Plates and Screws**
- **Sturdy Screwdriver bits are made of quality stainless steel**
- **Carefully engineered sets, implants and instruments**

Our company regularly trains appropriate Team Members on its legal and ethical obligations and MishaVet's policies and procedures related to marketing and promotional activities related to MishaVet's products. We regularly review and update our training programs as needed.

06 PHENIX Spinal Set

Phenix Spinal Set Features

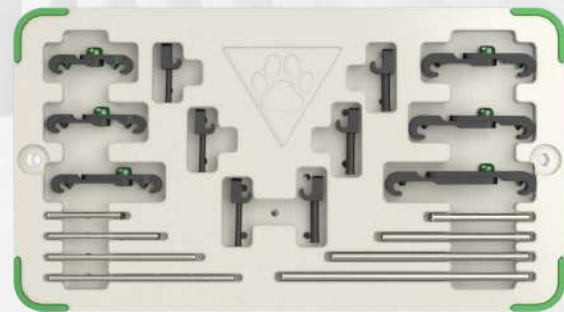
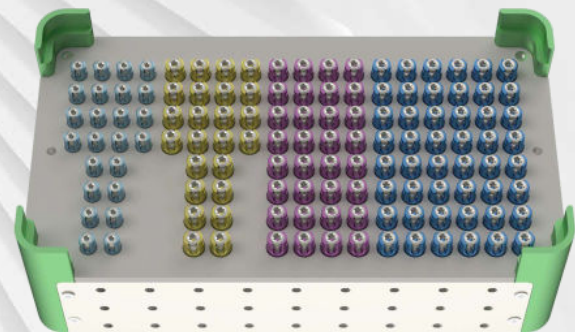
- ❖ Various types of disease can affect a small animal's spine.
- ❖ The purpose of spinal fixation is to restore and maintain disc space height and to increase the stability of the operated segment
- ❖ 'Spinal fusion' takes several vertebrae that were once articulating separately (but are now damaged) and joins them together to form one continuous structure
- ❖ Although this results in varying degrees of lost mobility for the dog, it does increase the stability of the spine overall. This can correct a multitude of issues such as pain and immobility and provide the small animal with a better quality of life
- ❖ The system is a comprehensive solution for posterior thoracolumbar surgical cases and widely used for the treatment of scoliosis, deformity and degenerative disc disease pathologies.
- ❖ Phenix Spinal Set offers:
 - **Low profile system**
 - **Easy lock system**
 - **Cylindrical feature Self-Tapping**
 - **40°-52° with Poly-axial screws**
 - **Implantable pedicle screws as a Monoaxial and Polyaxial Screws**
 - **Designed to minimize soft tissue interaction**
 - **Excellent anchoring stability of the implant guaranties lasting safety.**
- ❖ **Portable, only 7,20 kg, with dimensions: 535x245x130mm**



PHENIX Spinal Set 06

Phenix Spinal Set Implants

Code	Description	Hole/Size (Ea)/(mm)	Qty in Set (EA)
MPS2014	Polyaxial Screw, \varnothing 2,0 mm	14 mm	4
MPS2016	Polyaxial Screw, \varnothing 2,0 mm	16 mm	8
MPS2018	Polyaxial Screw, \varnothing 2,0 mm	18 mm	8
MPS2020	Polyaxial Screw, \varnothing 2,0 mm	20 mm	4
MPS2514	Polyaxial Screw, \varnothing 2,5 mm	14 mm	4
MPS2516	Polyaxial Screw, \varnothing 2,5 mm	16 mm	8
MPS2518	Polyaxial Screw, \varnothing 2,5 mm	18 mm	8
MPS2520	Polyaxial Screw, \varnothing 2,5 mm	20 mm	4
MPS3524	Polyaxial Screw, \varnothing 3,5 mm	24 mm	8
MPS3526	Polyaxial Screw, \varnothing 3,5 mm	26 mm	8
MPS3528	Polyaxial Screw, \varnothing 3,5 mm	28 mm	8
MPS3530	Polyaxial Screw, \varnothing 3,5 mm	30 mm	8
MPS4526	Polyaxial Screw, \varnothing 4,5 mm	26 mm	8
MPS4528	Polyaxial Screw, \varnothing 4,5 mm	28 mm	8
MPS4530	Polyaxial Screw, \varnothing 4,5 mm	30 mm	8
MPS4534	Polyaxial Screw, \varnothing 4,5 mm	34 mm	8
MPS4536	Polyaxial Screw, \varnothing 4,5 mm	36 mm	8
MPS4540	Polyaxial Screw, \varnothing 4,5 mm	40 mm	8
MTC2525	Transverse Connector, \varnothing 2,5	25 mm	1
MTC2535	Transverse Connector, \varnothing 2,5	35 mm	1
MTC2545	Transverse Connector, \varnothing 2,5	45 mm	1
MTC3535	Transverse Connector, \varnothing 3,5	35 mm	1
MTC3545	Transverse Connector, \varnothing 3,5	45 mm	1
MTC3555	Transverse Connector, \varnothing 3,5	55 mm	1
MLC2510	Lateral Connector, \varnothing 2,5	10 mm	1
MLC2512	Lateral Connector, \varnothing 2,5	12 mm	1
MLC2514	Lateral Connector, \varnothing 2,5	14 mm	1
MLC3514	Lateral Connector, \varnothing 3,5	14 mm	1
MLC3516	Lateral Connector, \varnothing 3,5	16 mm	1
MLC3518	Lateral Connector, \varnothing 3,5	18 mm	1
MSR2530	Rod, \varnothing 2,5	30 mm	2
MSR2545	Rod, \varnothing 2,5	45 mm	2
MSR2560	Rod, \varnothing 2,5	60 mm	2
MSR2575	Rod, \varnothing 2,5	75 mm	2
MSR2533	Rod, \varnothing 2,5	300 mm	2
MSR3540	Rod, \varnothing 3,5	40 mm	2
MSR3560	Rod, \varnothing 3,5	60 mm	2
MSR3580	Rod, \varnothing 3,5	80 mm	2
MSR3511	Rod, \varnothing 3,5	100 mm	2
MSR3533	Rod, \varnothing 3,5	300 mm	2



06 PHENIX Spinal Set

Phenix Spinal Set Instruments



Code	Description	Hole/Size (Ea)/(mm)	Qty in Set (EA)
MTL2500	Polyaxial Screw Set Outer Container		1
MTL2600	Polyaxial Screw Set Screw-Connector Tray		1
MTL2720	Polyaxial Screw Driver	For Ø2,0	1
MTL2745	Polyaxial Screw Driver	For Ø2,5-3,5-4,5	1
MTL1200	Depth Gauge	0-40mm	1
MTL2820	Set Screw Driver	For Ø2,0	1
MTL2845	Set Screw Driver	For Ø2,5-3,5-4,5	1
MTL2920	Set Screw Holder	For Ø2,0	1
MTL2945	Set Screw Holder	For Ø2,5-3,5-4,5	1
MTL3000	Connector Set Screw Driver		1
MTL3100	Knob Quick Coupling Handle		1
MTL3220	Probe	For Ø2,0-2,5	1
MTL3235	Probe	For Ø3,5-4,5	1
MTL3300	Bone AWL		1
MTL3400	In-situ bender	Left-Right	1
MTL3500	Rod Pusher		1
MTL3600	Distractor		1
MTL3700	Compressor		1
MTL3801	Torque Handle	1 Nm	1
MTL3803	Torque Handle	3 Nm	1
MTL3900	T Quick Coupling	T QC	1
MTL4000	Handle Rod Bender		1
MTL4100	L Anti Torque		1
MTL0315	Drill Bit	Ø1,5	1
MTL0320	Drill Bit	Ø2,0	1
MTL0330	Drill Bit	Ø3,0	1
MTL0340	Drill Bit	Ø4,0	1
MTL4225	Tap, 2,5mm	Ø2,5	1
MTL4235	Tap, 3,5mm	Ø3,5	1
MTL4245	Tap, 4,5mm	Ø4,5	1
MTL4301	Straight Feeler		1
MTL4302	Curved Feeler		1
MTL4400	Rod Holder Forcep		1
MTL4500	Persuader(Optional)		1

Surgical Motors 08

NOW WITH 3000 MAH SONY LITHIUM ION BATTERIES

NO OTHER SURGICAL MOTOR BRANDS HAVE 3000 Mah CAPACITY LITHIUM BATTERIES.

Reliable and High Performance with Japanese Makita Technology Inside. Low Noise and vibration level Cannulated Drill High speed: ≤ 1.350 rpm Oscillating Saw Speed: ≤ 16.000 cpm Voltage: AC220V/50Hz Sensitive trigger with High speed drilling, Low speed drilling, screw driving and tapping. Torque limiting for screw driving. Warranty: Motors with 1-year and lion batteries with 3-month warranty.



Host part

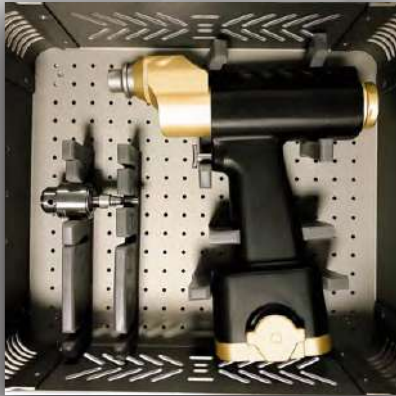
Parameter Category		No-Load speed	Frequency	Maximum Torque	5 Minutes Temperature	Noise
		rpm	Hz	N.m	°C	dB
BSF-SD	Bone drill	0-1350		≥ 3	≤ 25	≤ 75
	Reamer drill	0-300		≥ 3	≤ 25	≤ 75
	Oscillating Saw		0-16000		≤ 25	≤ 75
BSF-SD	AO Drill	0-1350		≥ 3	≤ 25	≤ 75
	Reamer	0-300		≥ 3	≤ 25	≤ 75
BSF-SS	Sternum Saw	0-16000	0-16000		≤ 25	≤ 75

Batter & Charger

Host	Voltage,	5.76 V Q ~ 17.28V
	power	$\geq 150W$
Charger	Input voltage	100V ~ 240V
	Input power	50Hz ~ 60Hz
	Input current,	0.5A (max)
	Output voltage,	7.2V ~ 14.4V
	Output current	1.0A (max)
Battery	Voltage	5.76V ~ 17.28V
	Charging time	$\approx 1H$
	Discharge time / 1A	≥ 30 min

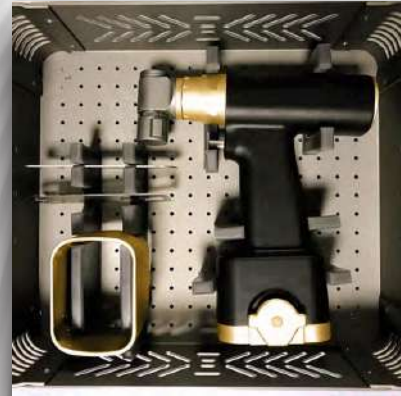
08 Surgical Motors

S SERIES CANNULATED SURGICAL DRILL SET



- ❖ One cannulated drill unit
- ❖ One lithium ion charger
- ❖ Two 3000 Mah Lithium ion batteries
- ❖ Two aseptic battery transfer rings
- ❖ One drill chuck and key
- ❖ One Aluminium case

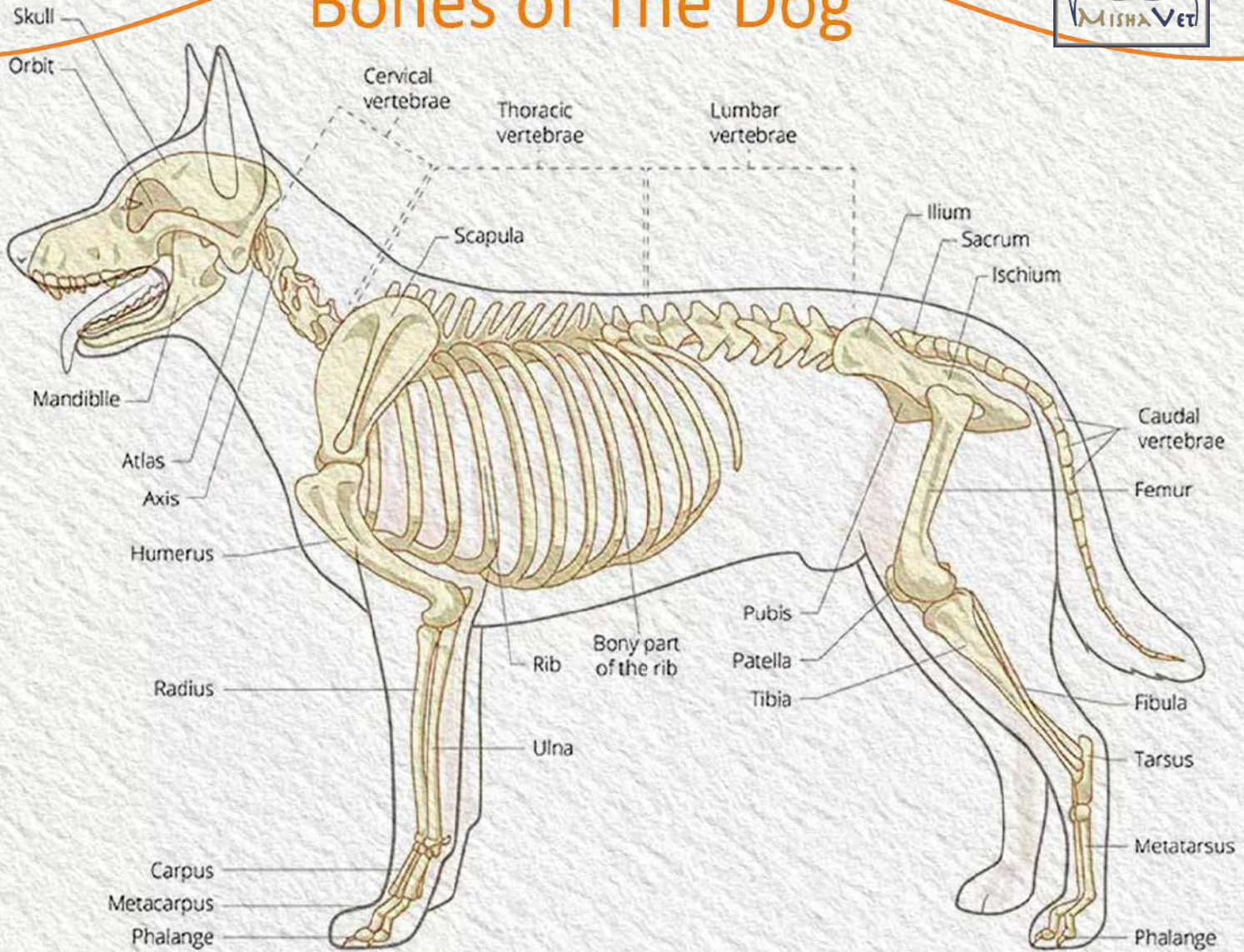
S SERIES SURGICAL SAW SET



- ❖ One saw unit
- ❖ One charger
- ❖ Two 3000 Mah Lithium ion batteries
- ❖ Two aseptic battery transfer rings
- ❖ Four saw blades
- ❖ One Aluminium case

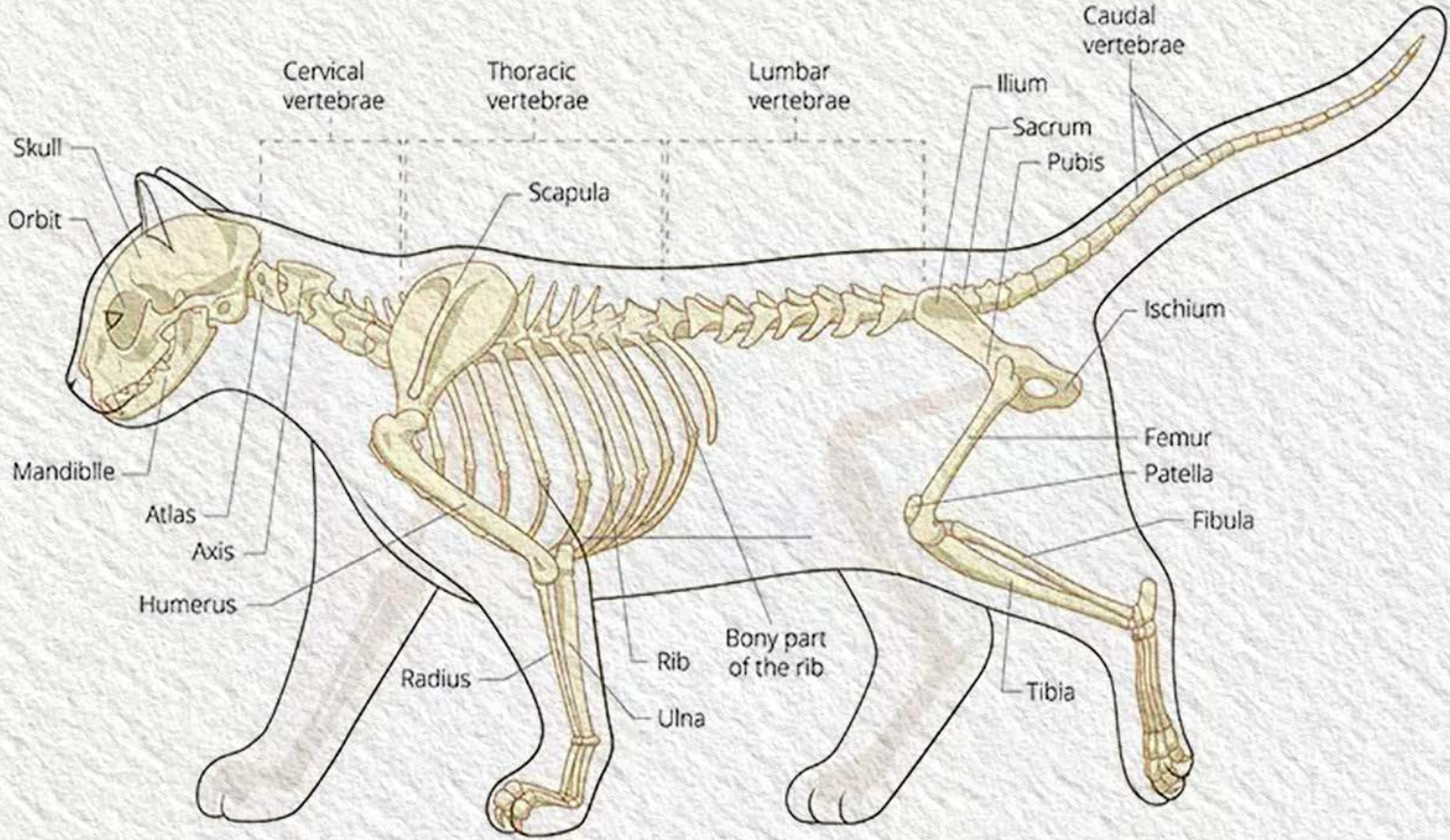


Bones of The Dog



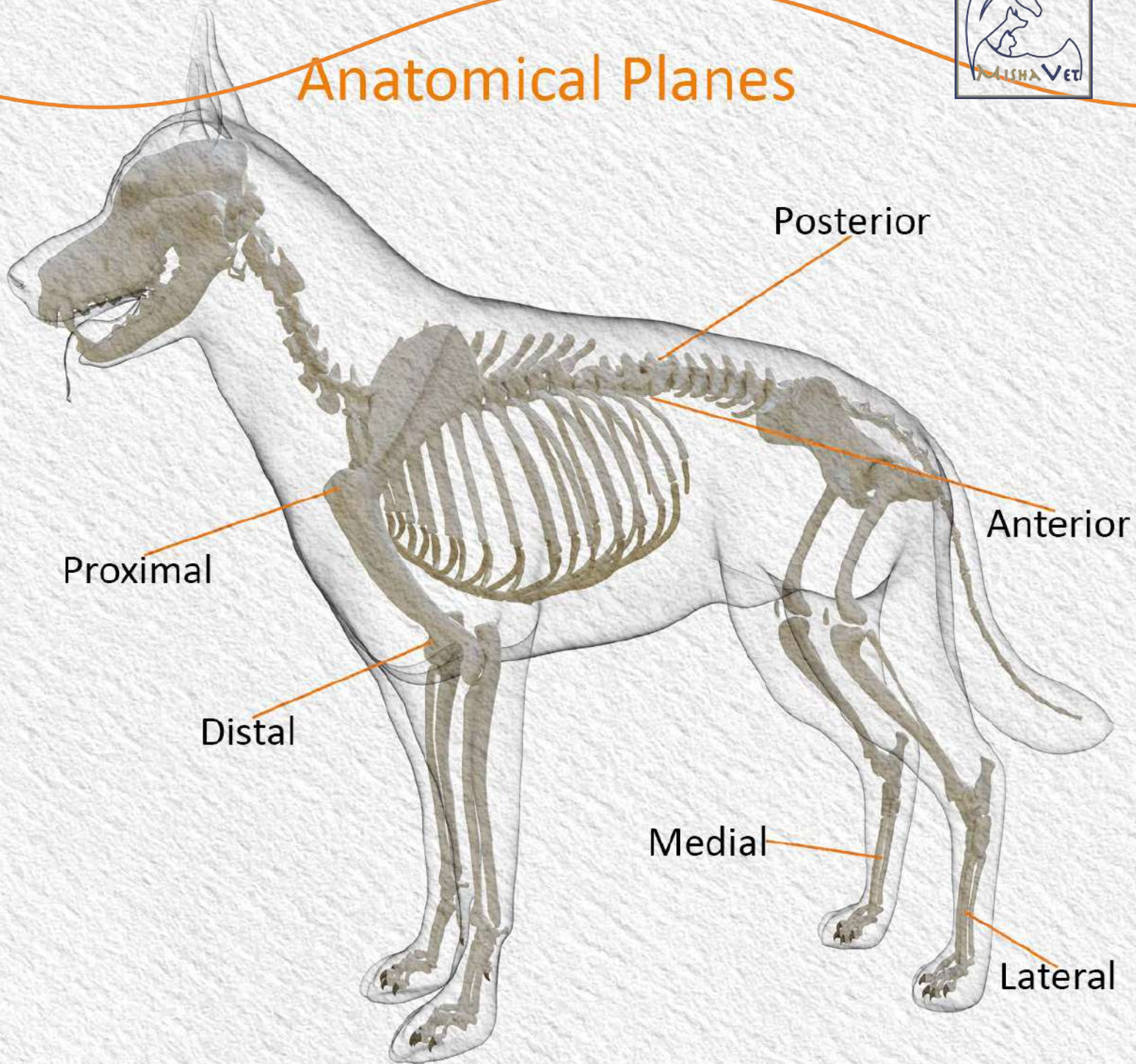


Bones of The Cat





Anatomical Planes





Who we are

We have nearly 40-year of combined experience in machining, and insight for the production of our medical products to treat a variety of injuries and conditons in medical sector. We fulfill the requirements of ISO 13485 and manufacturing of medical implants (Veterinary Spine&Trauma Solutions).

Our goal

Our main goal is to do our best to satisfy every customer who benefits of our products and services. We aim to do that by providing them timely, useful, and the best solutions.

info@mishavet.com
www.mishavet.com



Exclusive Distributor
Contactenos

WELLGO S. DE R.L. DE C.V.
Insurgentes Sur 2453
Torre Murano Piso. 6, Oficina. 6087
Tizapán San Ángel
Teléfono: 55 8014 8107, 55 5470 0857
Correo: ventas@wellgomexico.com
www.wellgomexico.com