



MISHA VET

Orthopedic &
Spinal Implants &
Instruments

"Premum, Non Nocere!"
"First, Do Not Harm!"



www.mishavet.com

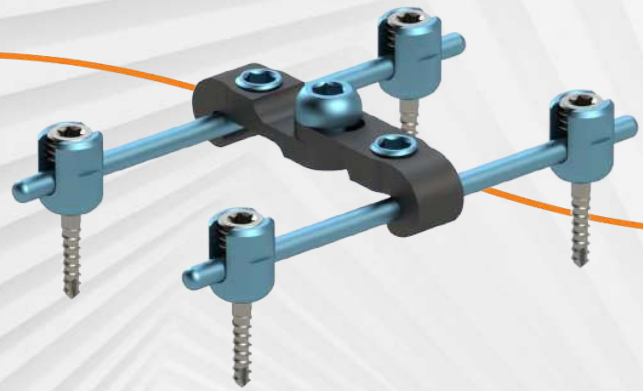
Introduction

The background features a 3D rendering of a dog's skull in the upper right, with a brown surgical plate secured by blue screws. In the lower right, a dog's paw is shown with a purple surgical device being applied, with a yellow screw being inserted into it. The background is a white, curved, ribbed structure that creates a tunnel-like effect.

MishaVet as a veterinary trauma and spinal products company is committed to maintaining the highest ethical, quality and compliance standards while meeting our customers' demands for surgical products;

- **Easy-to-use Solutions**
- **Enhanced Support**
- **Excellent Outcome**

Overview



MishaVet is committed to providing customers with excellent quality products and superior customer service.

Our company conducts business in an open and honest manner and rejects business practices that unnecessarily increase the cost of health treatment.

MishaVet's products fulfill the requirement of ISO 13485. Our Quality Management System carries out all the necessary follow-ups at all levels of our products.

MishaVet's products have been placed in quality on domestic and international markets.

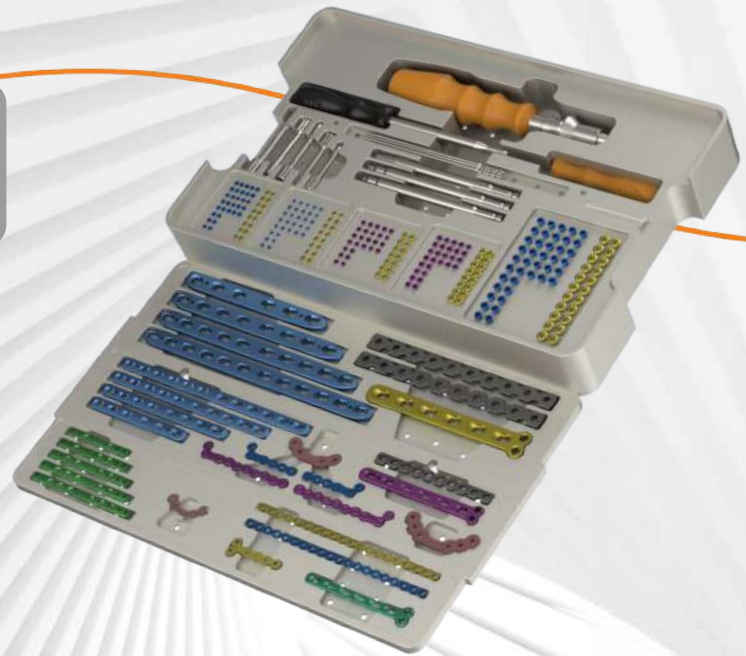
MishaVet's veterinary products that provide comprehensive medical solutions to help veterinarians treat patients successfully. Our products portfolio includes technically advanced implants and instruments:

- **100% Titanium(Ti6Al4V Grade 5) Plates and Screws**
- **Sturdy Screwdriver bits are made of quality stainless steel**
- **Carefully engineered sets, implants and instruments**

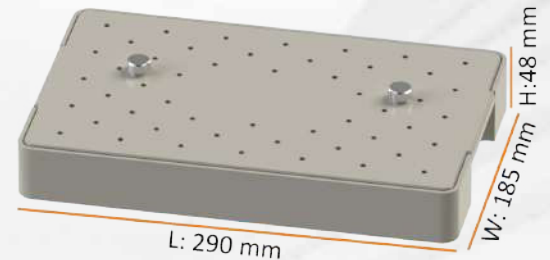
Our company regularly trains appropriate Team Members on its legal and ethical obligations and MishaVet's policies and procedures related to marketing and promotional activities related to MishaVet's products. We regularly review and update our training programs as needed.

03 POURYA Mix Set

Pourya Mix Set Features



- ❖ Especially created for breed&tiny and slightly larger dogs and cats, but not limited to
- ❖ Pre-contoured anatomical design
- ❖ Locking($\text{Ø}1.5$ & $\text{Ø}2.0$ & $\text{Ø}2.4$ & $\text{Ø}2.7$ & $\text{Ø}3.5\text{mm}$) and Non Locking Cortical Screws($\text{Ø}1.5$ & $\text{Ø}2.0$ & $\text{Ø}2.4$ & $\text{Ø}2.7$ & $\text{Ø}3.5\text{mm}$)
- ❖ Plate thickness 1.0-3.5mm
- ❖ Variable and different sized locking T plates up to $\pm 12^\circ$
- ❖ Titanium Alloy(Ti6Al4V , Gr.5) material, same with human material and process
- ❖ Left & right plate variation for anatomical match
- ❖ Limited contact shape for better osteointegration
- ❖ Different colored products for easy separation&usage
- ❖ Various plate shapes
- ❖ Portable, only 1,40 kg, with dimensions: 290x185x48 mm



POURYA Mix Set 03

Pourya Mix Set Implants

Code	Description	Hole/Size (Ea)/(mm)	Width (mm)	Thickness (mm)	Length (mm)	Qty in Set (EA)
MMP0100	Acetabular Plate 4 Holes 1.2 mm	4	3	1,2	26	1
MMX0104	Acetabular Plate 4 Holes 2,5 mm	4	5	2,5	34	1
MSP0200	Acetabular Plate 6 Holes 2,5 mm	6	5	2,5	46	1
MMP0206	LC Combihole Plate 6 Holes with 1,5 mm screw	5,	5,5	1,5	45	1
MMP0207	LC Combihole Plate 7 Holes with 1,5 mm screw	7	5,5	1,5	52	1
MMP0208	LC Combihole Plate 8 Holes with 1,5 mm screw	8	5,5	1,5	59	1
MMP0209	LC Combihole Plate 9 Holes with 1,5 mm screw	9	5,5	1,5	66	1
MMP0210	LC Combihole Plate 10 Holeswith 1,5 mm screw	10	5,5	1,5	73	1
MSP0406	LC Combihole Plate 6 Holes 2,5 mm	6	8	2,5	68	1
MSP0408	LC Combihole Plate 8 Holes 2,5 mm	8	8	2,5	89	1
MSP0410	LC Combihole Plate 10 Holes 2,5 mm	10	8	2,5	109,5	1
MSP0412	LC Combihole Plate 12 Holes 2,5 mm	12	8	2,5	137	1
MQP0306	LC Combihole Plate 6 Holes 3,5 mm	6	12	3,5	105	1
MQP0308	LC Combihole Plate 8 Holes 3,5 mm	8	12	3,5	125	1
MQP0310	LC Combihole Plate 10 Holes 3,5 mm	10	12	3,5	145	1
MQP0312	LC Combihole Plate 12 Holes 3,5 mm	12	12	3,5	165	1
MMP0401	Supracondylar Short Plate, Right 5 Holes	5	6	1,8	37	1
MMP0402	Supracondylar Short Plate, Left 5 Holes	5	6	1,8	37	1
MMP0501	Supracondylar Long Plate, Right 10 Holes	10	6	1,8	62,5	1
MMP0502	Supracondylar Long Plate, Left 10 Holes	10	6	1,8	62,5	1
MMP0600	T Plate 4 Holes 1,2 mm	4	5,7	1,2	34,5	2
MMP1200	T Combihole Plate 6 Holes 1,5 mm	6	6	1,5	67	1
MSP0100	T Combihole Plate 6 Holes 2,5 mm	6	8	2,5	78	1
MQP0100	T Combihole Plate 6 Holes 3,5 mm	6	12	3,5	105	1
MMP0720	Reconstruction Cuttable Plate 20 Holes 1mm	20	4,9	1	118,5	1
MMP0820	Reconstruction Cuttable Plate 20 Holes 1,5mm	20	4,9	1,5	118,5	1
MMX1025	Reconstruction Plate 10 Holes 2,5 mm	10	7	2,5	75	2
MMX1035	Reconstruction Plate 10 Holes 3,5 mm	10	10	3,5	123	2

03 POURYA Mix Set

Pourya Mix Set Screws



Code	Description	Size (Ea)/(mm)	Qty in Set (EA)
MSL1506	Locking Cortical Screw 1,5 x 6 mm	6	5
MSL1508	Locking Cortical Screw 1,5 x 8 mm	8	5
MSL1510	Locking Cortical Screw 1,5 x 10 mm	10	5
MSL1512	Locking Cortical Screw 1,5 x 12 mm	12	5
MSL1514	Locking Cortical Screw 1,5 x 14 mm	14	5
MSL1516	Locking Cortical Screw 1,5 x 16 mm	16	2
MSL1518	Locking Cortical Screw 1,5 x 18 mm	18	2
MSL1520	Locking Cortical Screw 1,5 x 20 mm	20	2
MSL2006	Locking Cortical Screw 2,0 x 6 mm	6	5
MSL2008	Locking Cortical Screw 2,0 x 8 mm	8	5
MSL2010	Locking Cortical Screw 2,0 x 10 mm	10	5
MSL2012	Locking Cortical Screw 2,0 x 12 mm	12	5
MSL2014	Locking Cortical Screw 2,0 x 14 mm	14	5
MSL2016	Locking Cortical Screw 2,0 x 16 mm	16	2
MSL2018	Locking Cortical Screw 2,0 x 18 mm	18	2
MSL2020	Locking Cortical Screw 2,0 x 20 mm	20	2

Code	Description	Size (Ea)/(mm)	Qty in Set (EA)
MSL2410	Locking Cortical Screw 2,4 x 10 mm	10	5
MSL2412	Locking Cortical Screw 2,4 x 12 mm	12	5
MSL2414	Locking Cortical Screw 2,4 x 14 mm	14	5
MSL2416	Locking Cortical Screw 2,4 x 16 mm	16	5
MSL2418	Locking Cortical Screw 2,4 x 18 mm	18	2
MSL2420	Locking Cortical Screw 2,4 x 20 mm	20	2
MSL2422	Locking Cortical Screw 2,4 x 22 mm	20	2
MSL2710	Locking Cortical Screw 2,7 x 10 mm	10	5
MSL2712	Locking Cortical Screw 2,7 x 12 mm	12	5
MSL2714	Locking Cortical Screw 2,7 x 14 mm	14	5
MSL2716	Locking Cortical Screw 2,7 x 16 mm	16	5
MSL2718	Locking Cortical Screw 2,7 x 18 mm	18	2
MSL2720	Locking Cortical Screw 2,7 x 20 mm	20	2
MSL2722	Locking Cortical Screw 2,7 x 22 mm	20	2
MSL2724	Locking Cortical Screw 2,7 x 24 mm	20	2
MSL3510	Locking Cortical Screw 3,5 x 10 mm	14	5
MSL3512	Locking Cortical Screw 3,5 x 12 mm	16	5
MSL3514	Locking Cortical Screw 3,5 x 14 mm	14	5
MSL3516	Locking Cortical Screw 3,5 x 16 mm	16	5
MSL3518	Locking Cortical Screw 3,5 x 18 mm	18	5
MSL3520	Locking Cortical Screw 3,5 x 20 mm	20	5
MSL3522	Locking Cortical Screw 3,5 x 22 mm	22	2
MSL3524	Locking Cortical Screw 3,5 x 24 mm	24	2
MSL3526	Locking Cortical Screw 3,5 x 26 mm	26	2
MSL3528	Locking Cortical Screw 3,5 x 28 mm	28	2
MSL3530	Locking Cortical Screw 3,5 x 30 mm	30	2

POURYA Mix Set 03

Pourya Mix Set Screws

Code	Description	Size (Ea)/(mm)	Qty in Set (EA)
MSN1506	Non-Locking Cortical Screw 1,5 x 6 mm	6	2
MSN1508	Non-Locking Cortical Screw 1,5 x 8 mm	8	2
MSN1510	Non-Locking Cortical Screw 1,5 x 10 mm	10	2
MSN1512	Non-Locking Cortical Screw 1,5 x 12 mm	12	2
MSN1514	Non-Locking Cortical Screw 1,5 x 14 mm	14	2
MSN1516	Non-Locking Cortical Screw 1,5 x 16 mm	16	2
MSN1518	Non-Locking Cortical Screw 1,5 x 18 mm	18	2
MSN1520	Non-Locking Cortical Screw 1,5 x 20 mm	20	2
MSN2006	Non-Locking Cortical Screw 2,0 x 6 mm	6	2
MSN2008	Non-Locking Cortical Screw 2,0 x 8 mm	8	2
MSN2010	Non-Locking Cortical Screw 2,0 x 10 mm	10	2
MSN2012	Non-Locking Cortical Screw 2,0 x 12 mm	12	2
MSN2014	Non-Locking Cortical Screw 2,0 x 14 mm	14	2
MSN2016	Non-Locking Cortical Screw 2,0 x 16 mm	16	2
MSN2018	Non-Locking Cortical Screw 2,0 x 18 mm	18	2
MSN2020	Non-Locking Cortical Screw 2,0 x 20 mm	20	2
MSN2410	Non-Locking Cortical Screw 2,4 x 10 mm	10	2
MSN2412	Non-Locking Cortical Screw 2,4 x 12 mm	12	2
MSN2414	Non-Locking Cortical Screw 2,4 x 14 mm	14	2
MSN2416	Non-Locking Cortical Screw 2,4 x 16 mm	16	2
MSN2418	Non-Locking Cortical Screw 2,4 x 18 mm	18	2
MSN2420	Non-Locking Cortical Screw 2,4 x 20 mm	20	2
MSN2422	Non-Locking Cortical Screw 2,4 x 22 mm	22	2
MSN2710	Non-Locking Cortical Screw 2,7 x 10 mm	10	2
MSN2712	Non-Locking Cortical Screw 2,7 x 12 mm	12	2
MSN2714	Non-Locking Cortical Screw 2,7 x 14 mm	14	2
MSN2716	Non-Locking Cortical Screw 2,7 x 16 mm	16	2
MSN2718	Non-Locking Cortical Screw 2,7 x 18 mm	18	2
MSN2720	Non-Locking Cortical Screw 2,7 x 20 mm	20	2
MSN2722	Non-Locking Cortical Screw 2,7 x 22 mm	22	2
MSN2724	Non-Locking Cortical Screw 2,7 x 24 mm	24	2



Code	Description	Size (Ea)/(mm)	Qty in Set (EA)
MSN3510	Non-Locking Cortical Screw 3,5 x 10 mm	10	2
MSN3512	Non-Locking Cortical Screw 3,5 x 12 mm	12	2
MSN3514	Non-Locking Cortical Screw 3,5 x 14 mm	14	2
MSN3516	Non-Locking Cortical Screw 3,5 x 16 mm	16	2
MSN3518	Non-Locking Cortical Screw 3,5 x 18 mm	18	2
MSN3520	Non-Locking Cortical Screw 3,5 x 20 mm	20	2
MSN3522	Non-Locking Cortical Screw 3,5 x 22 mm	22	2
MSN3524	Non-Locking Cortical Screw 3,5 x 24 mm	24	2
MSN3526	Non-Locking Cortical Screw 3,5 x 26 mm	26	2
MSN3528	Non-Locking Cortical Screw 3,5 x 28 mm	28	2
MSN3530	Non-Locking Cortical Screw 3,5 x 30 mm	30	2

03 POURYA Mix Set

Pourya Mix Set Instruments

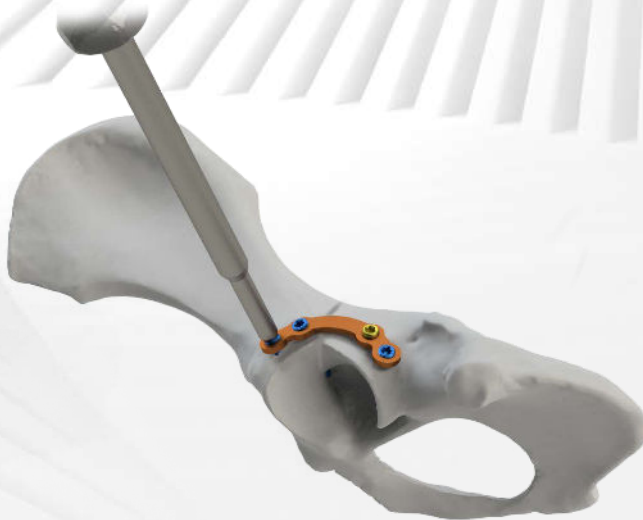


Code	Description	Size (Ea)/(mm)	Qty in Set (EA)
MTL0106	Screw Driver with Handle	T6 TORX	1
MTL0400	Screw Driver Handle		1
MTL0215	Drill Guide	For Ø1,5 Screw	1
MTL0220	Drill Guide	For Ø2,0 Screw	1
MTL0224	Drill Guide	For Ø2,4 Screw	1
MTL0227	Drill Guide	For Ø2,7 Screw	1
MTL0235	Drill Guide	For Ø3,5 Screw	1
MTL0311	Drill Bit	Ø1,1	2
MTL0315	Drill Bit	Ø1,5	2
MTL0320	Drill Bit	Ø2,20	2
MTL0322	Drill Bit	Ø2,25	2
MTL0328	Drill Bit	Ø2,28	2
MTL0508	Screw Driver Bit	Torx 8	1
MTL0520	Screw Driver Bit	Hex 2	1
MTL0525	Screw Driver Bit	Hex 2.5	1
MMC0000	Container		1

POURYA Mix Set 03

Acetabular Plate

- ❖ For use with Ø1.9 mm locking cortical screws
- ❖ Fully anatomically designed for acetabular fractures
- ❖ 4-hole, thickness: 1,2mm, length: 26mm

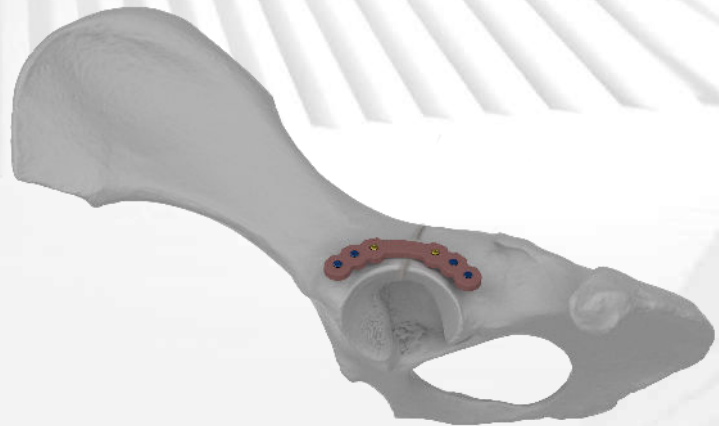


03 POURYA Mix Set

Acetabular Plate



- ❖ For use with $\varnothing 2.4$ mm or $\varnothing 2.7$ mm locking cortical screws
- ❖ Fully anatomically designed for acetabular fractures
- ❖ 6-hole, thickness: 2,5mm, length: 46mm



POURYA Mix Set 03

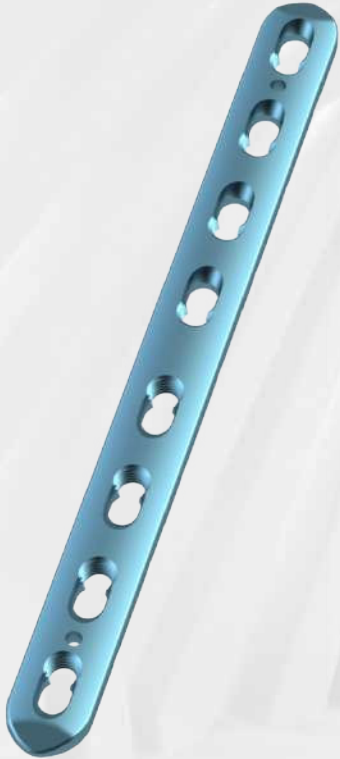
LC Combi-hole Plate

- ❖ For use with Ø2.0 mm both locking&non locking cortical screws
- ❖ Offers the possibility of using two screws side by side
- ❖ Offers an angled locking technology
- ❖ Requires special LCP hole
- ❖ Offers Dynamic Compression
- ❖ (6, 7, 8, 9, 10)-hole, thickness: 1.5, 2.0mm, length: (45, 52, 59, 66, 73)mm

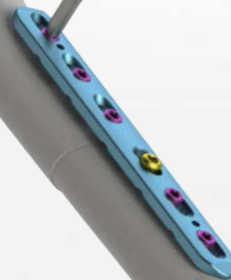


03 POURYA Mix Set

LC Combi-hole Plate



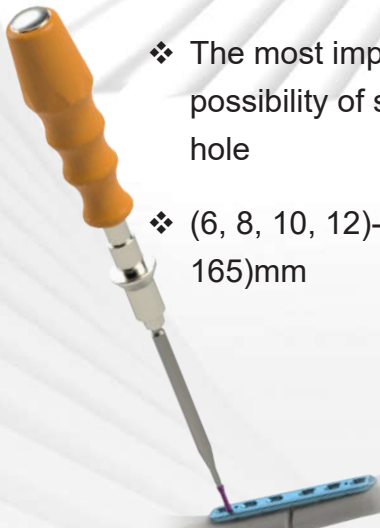
- ❖ For use with Ø2.4 mm or Ø2.7 mm locking&non locking cortical screws designed for long bone fractures of cats and dogs
- ❖ Offers the possibility of using locking or dynamic compression (non locking cortical screw) in the same hole
- ❖ When angled screw use is preferred, it offers the opportunity to use an angled adjustment method in the hole with a cortical screw
- ❖ The most important difference from LC DCP plates is the possibility of setting angle screws in every hole
- ❖ (6, 8,10,12)-hole, thickness: 2,5mm, length: (68, 89, 109,5, 137)mm



POURYA Mix Set 03

LC Combi-hole Plate

- ❖ For use with Ø3.5 mm locking&non locking cortical screws
- ❖ Designed for long bone fractures of dogs
- ❖ Allows the use of possibility locked or dynamic compression (non locking cortical screw) in the same hole
- ❖ When using an angled non locking cortical screw, it offers the possibility of using an angled setting method with a non locking cortical screw in the hole
- ❖ The most important difference from LC DCP plates is the possibility of setting angled non locking cortical screws in every hole
- ❖ (6, 8, 10, 12)-hole, thickness: 3,5mm, length: (105, 125, 145, 165)mm

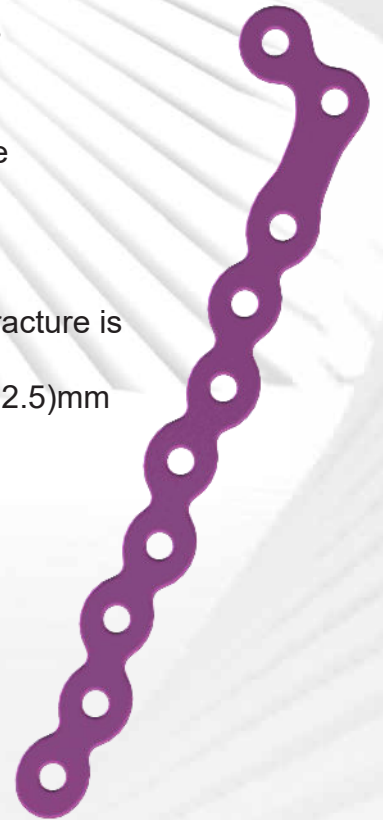


03 POURYA Mix Set

Supracondylar Short/Long Plate L/R



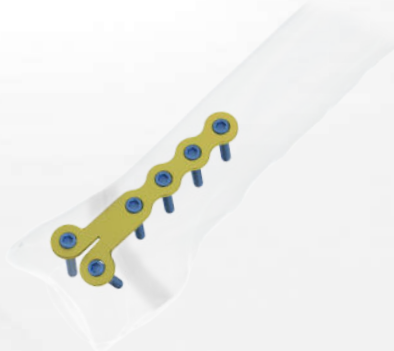
- ❖ For use with $\text{Ø}1.9$ mm locking cortical screws
- ❖ Especially designed for supracondylar femoral fractures which are especially common in cats
- ❖ Allows at least two locking screws to be inserted into the condylar in the distal fragment
- ❖ With its long or short options, it is designed with a solution-oriented approach, no matter how difficult the fracture is
- ❖ (5, 10)-hole, Right/Left, thickness: 1,8mm, length: (37, 62.5)mm



POURYA Mix Set 03

T Plate

- ❖ For use with Ø1.9 mm locking cortical screws
- ❖ Fully anatomically designed for acetabular fractures
- ❖ Easily bendable head matches the bone
- ❖ 4-hole, thickness: 1,2mm, length: 34,5mm



03 POURYA Mix Set

T Combi-hole Plate



- ❖ For use with Ø1.9 mm locking and Ø2.0 non locking cortical screws
- ❖ Especially designed for distal radius fractures union and problematic fractures in small breed dogs
- ❖ Offers special LC plate for distal radius fractures
- ❖ Offers dynamic compression
- ❖ 6-hole, thickness:1,5mm, length: 67mm



POURYA Mix Set 03

T Combi-hole Plate

- ❖ For use with Ø2.4 mm or Ø2.7 mm locking&non locking cortical screws
- ❖ It is a special design with angled locking technology with the possibility of using two locking cortical screws side by side
- ❖ Offers the possibility of using either locking cortical screw or dynamic compression in the special LCP hole
- ❖ Offers excellent results especially in fractures such as distal radius and proximal tibia fractures with its special design
- ❖ 6-hole, thickness: 2,5mm, length: 78mm

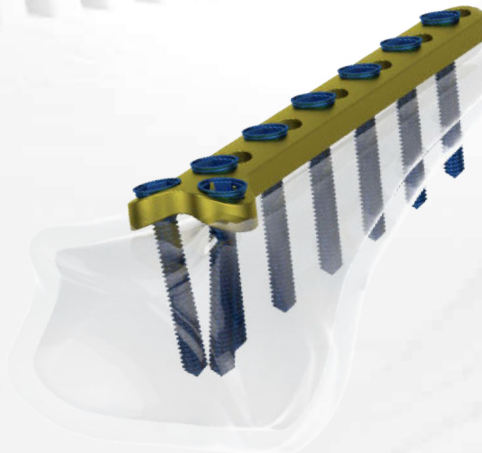


03 POURYA Mix Set

T Combi-hole Plate



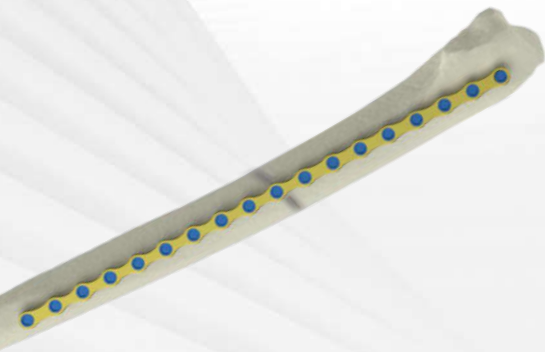
- ❖ For use with $\varnothing 3.5$ mm locking & non locking cortical screws
- ❖ Has a special design with angled locking technology with the possibility of using two locking cortical screws side by side
- ❖ Offers the possibility of using either locking cortical screw or dynamic compression in the special LCP hole
- ❖ Offers excellent results especially in fractures such as distal radius and proximal tibia fractures with its special design
- ❖ 6-hole, thickness: 3,5mm, length: 105mm



POURYA Mix Set 03

Reconstruction Cuttable Plate

- ❖ For use with Ø2.0 mm locking cortical screws
- ❖ Offers excellent solutions in hip fractures in cats
- ❖ It has versatile usage possibilities such as radius/ulna fractures, jaw fractures, scapular fractures
- ❖ Cuttable plate provides easy anatomical forming, and it can be cutted easily
- ❖ 20-hole, thickness:1.0, 1.5mm, length: 118,5 mm



03 POURYA Mix Set

Reconstruction Plate



- ❖ For use with Ø2.4 mm locking or Ø2.7 mm locking cortical screws
- ❖ Have special designed gaps that offer the advantage of easier and angled bending
- ❖ Provides strong stabilization with locking screw
- ❖ It is a special design that offers excellent results in hip fractures and jaw fractures in dogs
- ❖ 10-hole, thickness: 2,5mm, length: 73 mm

POURYA Mix Set 03

Reconstruction Plate

- ❖ For use with Ø3.5 mm locking cortical screws
- ❖ Have special designed gaps that offer the advantage of easier and angled bending
- ❖ Provides strong stabilization with locking cortical screw
- ❖ It is a special design that offers excellent results in hip fractures and jaw fractures in small animals
- ❖ 10-hole, thickness: 3,5mm, length: 122 mm



03 POURYA Mix Set

Locking & Non Locking Cortical Screws



- **Ø1.5 mm Locking Cortical Screw**

- ❖ For use with Acetabular, LC Combi-hole, T, Supracondylar, L Plates
- ❖ In order to straighten the driving, T6 Torx System is used
- ❖ For best locking of the plate, double pitch and angled head is used
- ❖ Length:(6, 8, 10, 12, 14, 16, 18, 20)mm

- **Ø2.0 Locking/Non Locking Cortical Screw**

- ❖ For with Reconstruction, T Combi-hole, MIPO, Straight Plates
- ❖ In order to straighten the driving, T8 Torx System is used
- ❖ For best locking of the plate, double pitch and angled head is used
- ❖ Spherical design in the head of non locking screws fulfil
- ❖ Length:(6, 8, 10, 12, 14, 16, 18, 20)mm

POURYA Mix Set 03

Locking&Non Locking Cortical Screws

- **Ø2.4/2.7 mm Locking Cortical Screw**

- ❖ For use with Acetabular, LC Combi-hole, T, LC-DCP, T Combi-hole, Reconstruction, Straight Plates
- ❖ In order to straighten the driving, T8 Torx System is used
- ❖ For best locking of the plate, double pitch and angled head is used
- ❖ Length:(10, 12, 14, 16, 18, 20)mm



- **Ø2.4/2.7 mm Non Locking Cortical Screw**

- ❖ For with T Combi-hole, LC Combi-hole, LC-DCP,
- ❖ In order to straighten the driving, Hex 2.0 System is used
- ❖ For best locking of the plate, double pitch and angled head is used
- ❖ Spherical design in the head of non locking screws fulfil
- ❖ Length:(10, 12, 14, 16, 18, 20)mm



03 POURYA Mix Set

Locking&Non Locking Cortical Screws

- **Ø3.5 mm Locking Cortical Screw**

- ❖ For use with T Combi-hole, LC-DCP, LC Combi-hole, Reconstruction,
- ❖ In order to straighten the driving, Hex 2.5 System is used
- ❖ For best locking of the plate, double pitch and angled head is used
- ❖ Length:(14, 16, 18, 20, 22, 24, 26, 28, 30)mm



- **Ø3.5 mm Non Locking Cortical Screw**

- ❖ For with T Combi-hole, LC-DCP, LC Combi-hole,
- ❖ In order to straighten the driving, Hex 2.5 System is used
- ❖ For best locking of the plate, double pitch and angled head is used
- ❖ Spherical design in the head of non locking screws fulfil
- ❖ Length:(20, 22, 24, 26, 28, 30)mm



Surgical Motors 08

NOW WITH 3000 MAH SONY LITHIUM ION BATTERIES

NO OTHER SURGICAL MOTOR BRANDS HAVE 3000 Mah CAPACITY LITHIUM BATTERIES.

Reliable and High Performance with Japanese Makita Technology Inside. Low Noise and vibration level Cannulated Drill High speed: ≤ 1.350 rpm Oscillating Saw Speed: ≤ 16.000 cpm Voltage: AC220V/50Hz Sensitive trigger with High speed drilling, Low speed drilling, screw driving and tapping. Torque limiting for screw driving. Warranty: Motors with 1-year and lion batteries with 3-month warranty.

Host part

Parameter Category		No-Load speed	Frequency	Maximum Torque	5 Minutes Temperature	Noise
		rpm	Hz	N.m	°C	dB
BSF-SD	Bone drill	0-1350		≥ 3	≤ 25	≤ 75
	Reamer drill	0-300		≥ 3	≤ 25	≤ 75
	Oscillating Saw		0-16000		≤ 25	≤ 75
BSF-SD	AO Drill	0-1350		≥ 3	≤ 25	≤ 75
	Reamer	0-300		≥ 3	≤ 25	≤ 75
BSF-SS	Sternum Saw	0-16000	0-16000		≤ 25	≤ 75

S SERIES CANNULATED SURGICAL DRILL & SAW SET

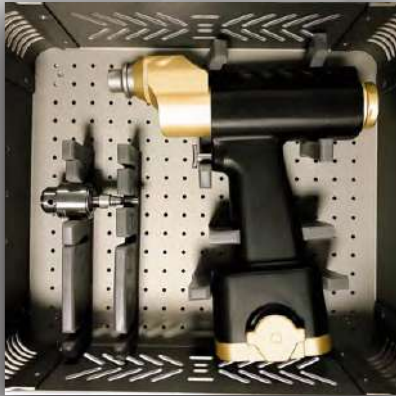


Battery & Charger

Host	Voltage,	5.76 V Q ~ 17.28V
	power	$\geq 150W$
Charger	Input voltage	100V ~ 240V
	Input power	50Hz ~ 60Hz
	Input current,	0.5A (max)
	Output voltage,	7.2V ~ 14.4V
	Output current	1.0A (max)
Battery	Voltage	5.76V ~ 17.28V
	Charging time	$\approx 1H$
	Discharge time / 1A	≥ 30 min

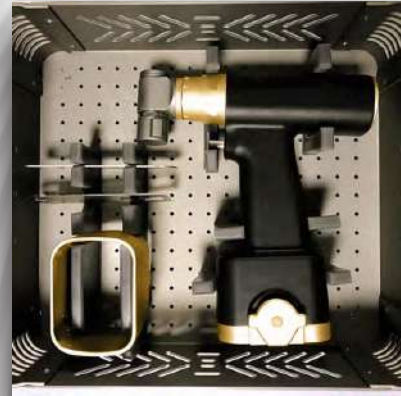
08 Surgical Motors

S SERIES CANNULATED SURGICAL DRILL SET



- ❖ One cannulated drill unit
- ❖ One lithium ion charger
- ❖ Two 3000 Mah Lithium ion batteries
- ❖ Two aseptic battery transfer rings
- ❖ One drill chuck and key
- ❖ One Aluminium case

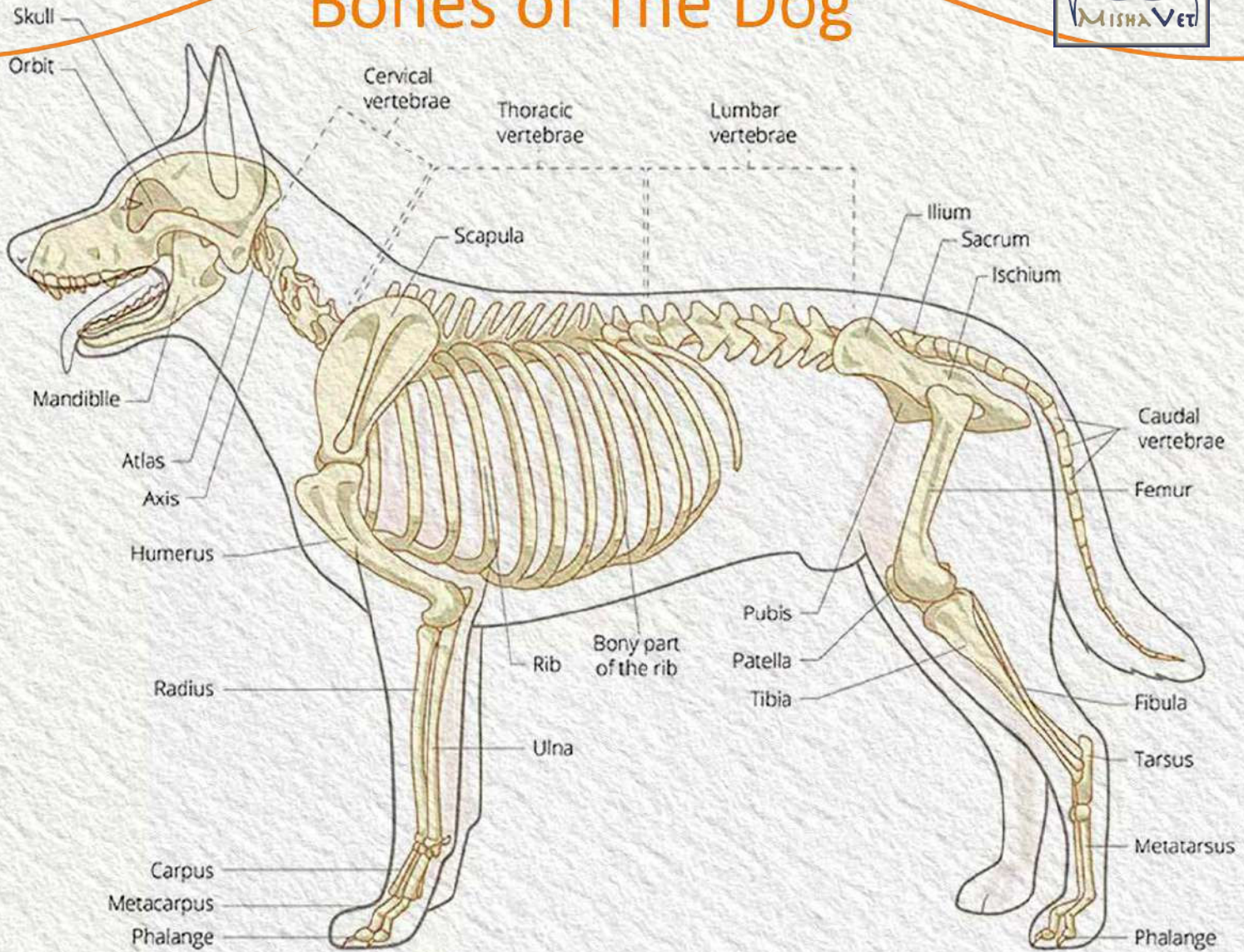
S SERIES SURGICAL SAW SET



- ❖ One saw unit
- ❖ One charger
- ❖ Two 3000 Mah Lithium ion batteries
- ❖ Two aseptic battery transfer rings
- ❖ Four saw blades
- ❖ One Aluminium case

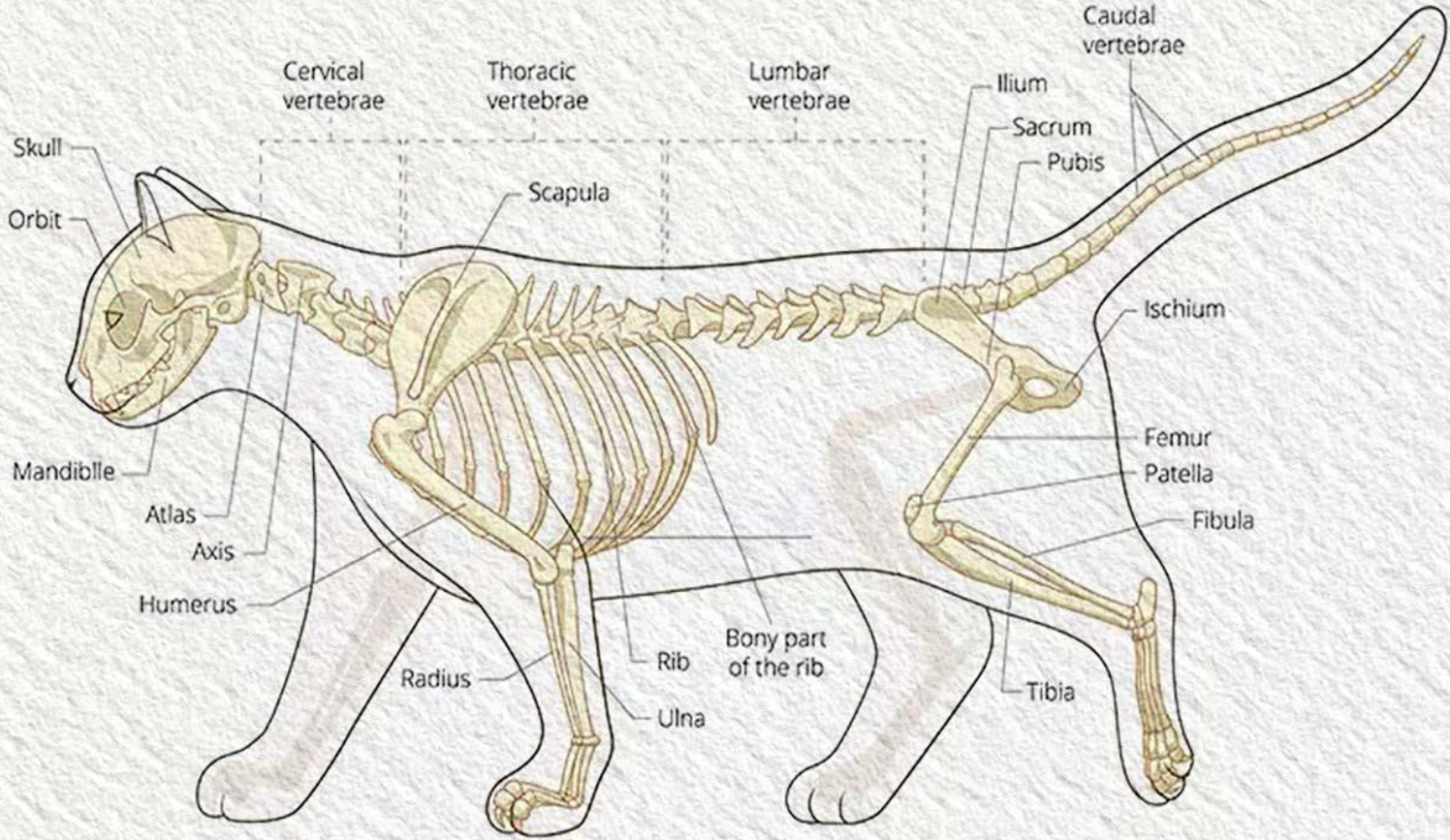


Bones of The Dog



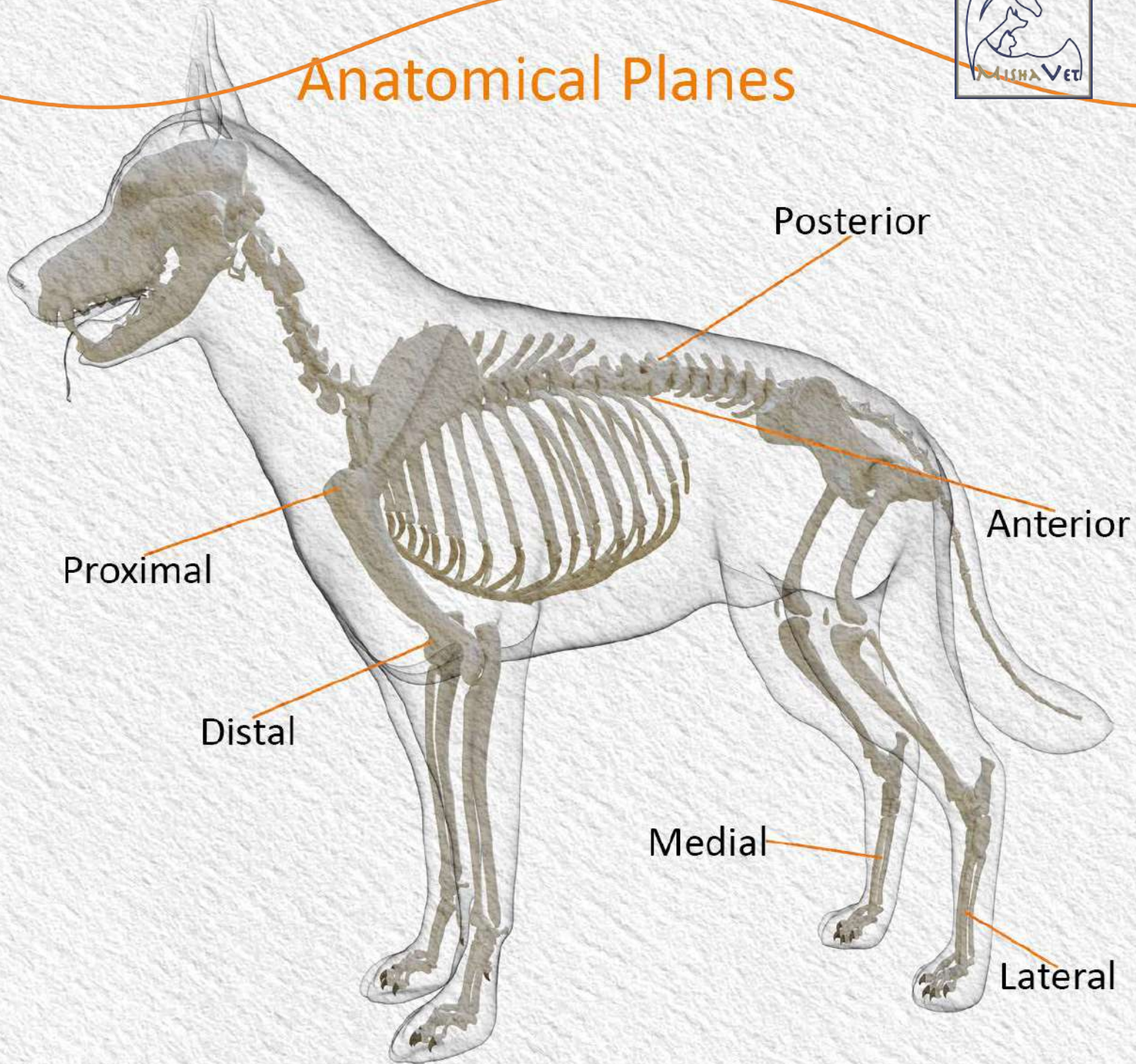


Bones of The Cat





Anatomical Planes





Who we are

We have nearly 40-year of combined experience in machining, and insight for the production of our medical products to treat a variety of injuries and conditons in medical sector. We fulfill the requirements of ISO 13485 and manufacturing of medical implants (Veterinary Spine&Trauma Solutions).

Our goal

Our main goal is to do our best to satisfy every customer who benefits of our products and services. We aim to do that by providing them timely, useful, and the best solutions.

info@mishavet.com
www.mishavet.com



Exclusive Distributor
Contactenos

WELLGO S. DE R.L. DE C.V.
Insurgentes Sur 2453
Torre Murano Piso. 6, Oficina. 6087
Tizapán San Ángel
Teléfono: 55 8014 8107, 55 5470 0857
Correo: ventas@wellgomexico.com
www.wellgomexico.com