



MISHA VET

Orthopedic &
Spinal Implants &
Instruments

"Premum, Non Nocere!"
"First, Do Not Harm!"



www.mishavet.com

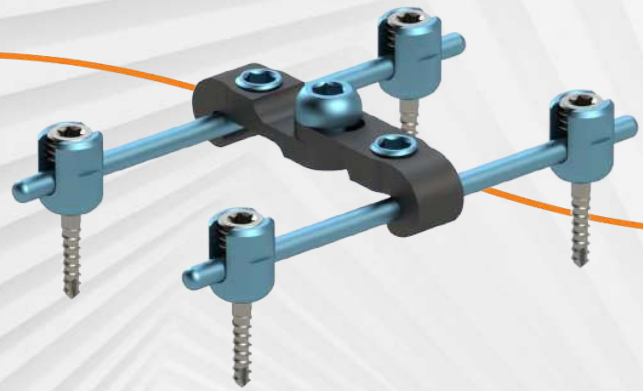
Introduction

The background features a 3D rendered scene. At the top, a dog's skull is shown with a brown surgical plate secured by blue screws. At the bottom, a hand is using a silver screwdriver to tighten a yellow screw into a purple surgical plate on a bone. The background is a white, curved, ribbed structure that creates a tunnel-like effect.

MishaVet as a veterinary trauma and spinal products company is committed to maintaining the highest ethical, quality and compliance standards while meeting our customers' demands for surgical products;

- **Easy-to-use Solutions**
- **Enhanced Support**
- **Excellent Outcome**

Overview



MishaVet is committed to providing customers with excellent quality products and superior customer service.

Our company conducts business in an open and honest manner and rejects business practices that unnecessarily increase the cost of health treatment.

MishaVet's products fulfill the requirement of ISO 13485. Our Quality Management System carries out all the necessary follow-ups at all levels of our products.

MishaVet's products have been placed in quality on domestic and international markets.

MishaVet's veterinary products that provide comprehensive medical solutions to help veterinarians treat patients successfully. Our products portfolio includes technically advanced implants and instruments:

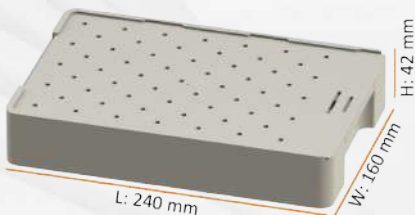
- **100% Titanium(Ti6Al4V Grade 5) Plates and Screws**
- **Sturdy Screwdriver bits are made of quality stainless steel**
- **Carefully engineered sets, implants and instruments**

Our company regularly trains appropriate Team Members on its legal and ethical obligations and MishaVet's policies and procedures related to marketing and promotional activities related to MishaVet's products. We regularly review and update our training programs as needed.

QUINCY Maxi Set 04

Quincy Maxi Set Features

- ❖ Especially created for larger dogs and cats
- ❖ Pre-contoured anatomical design
- ❖ Locking($\text{\O}3.5\text{mm}$) and Non Locking Cortical Screws($\text{\O}3.5\text{mm}$)
- ❖ Plate thickness 3.5 mm
- ❖ Variable locking T plate up to $\pm 12^\circ$
- ❖ Titanium Alloy(Ti6Al4V, Gr.5) material, same with human material and process
- ❖ Left & right plate variation for anatomical match
- ❖ Limited contact shape for better osteointegration
- ❖ Different colored products for easy separation&usage
- ❖ Various plate shapes
- ❖ Portable, only 1,80 kg, with dimensions: 240x160x42 mm



04 QUINCY Maxi Set

Quincy Maxi Set Implants

Code	Description	Hole/Size (Ea)/(mm)	Width (mm)	Thickness (mm)	Length (mm)	Qty in Set (EA)
MQP0100	T Combihole Plate, 6 Holes, 3,5 mm	6	12	3,5	105	1
MQP0206	LC-DCP Plate, 6 Holes, 3,5 mm	6	12	3,5	105	1
MQP0208	LC-DCP Plate, 8 Holes, 3,5 mm	8	12	3,5	125	1
MQP0210	LC-DCP Plate, 10 Holes, 3,5 mm	10	12	3,5	145	1
MQP0212	LC-DCP Plate, 12 Holes, 3,5 mm	12	12	3,5	165	1
MQP0306	LC Combihole Plate, 6 Holes, 3,5 mm	6	12	3,5	105	1
MQP0308	LC Combihole Plate, 8 Holes, 3,5 mm	8	12	3,5	125	1
MQP0310	LC Combihole Plate, 10 Holes, 3,5 mm	10	12	3,5	145	1
MQP0312	LC Combihole Plate, 12 Holes, 3,5 mm	12	12	3,5	165	1
MQP0404	Reconstruction Plate, 4 Holes, 3,5 mm	4	10	3,5	46	1
MQP0405	Reconstruction Plate, 5 Holes, 3,5 mm	5	10	3,5	59	1
MQP0406	Reconstruction Plate, 6 Holes, 3,5 mm	6	10	3,5	71	1
MQP0407	Reconstruction Plate, 7 Holes, 3,5 mm	7	10	3,5	83	1
MQP0408	Reconstruction Plate, 8 Holes, 3,5 mm	8	10	3,5	96	1
MQP0409	Reconstruction Plate, 9 Holes, 3,5 mm	9	10	3,5	109	1
MQP0410	Reconstruction Plate, 10 Holes, 3,5 mm	10	10	3,5	122	1



QUINCY Maxi Set 04

Quincy Maxi Set Screws and Instruments

Code	Description	Size (Ea)/(mm)	Qty in Set (EA)
MSL3514	Locking Cortical Screw, 3,5 x 14 mm	14	10
MSL3516	Locking Cortical Screw, 3,5 x 16 mm	16	10
MSL3518	Locking Cortical Screw, 3,5 x 18 mm	18	10
MSL3520	Locking Cortical Screw, 3,5 x 20 mm	20	10
MSL3522	Locking Cortical Screw, 3,5 x 22 mm	22	10
MSL3524	Locking Cortical Screw, 3,5 x 24 mm	24	10
MSL3526	Locking Cortical Screw, 3,5 x 26 mm	26	10
MSL3528	Locking Cortical Screw, 3,5 x 28 mm	28	10
MSL3530	Locking Cortical Screw, 3,5 x 30 mm	30	10
MSN3520	Non-Locking Cortical Screw, 3,5 x 20 mm	20	10
MSN3522	Non-Locking Cortical Screw, 3,5 x 22 mm	22	10
MSN3524	Non-Locking Cortical Screw, 3,5 x 24 mm	24	10
MSN3526	Non-Locking Cortical Screw, 3,5 x 26 mm	26	10
MSN3528	Non-Locking Cortical Screw, 3,5 x 28 mm	28	10
MSN3530	Non-Locking Cortical Screw, 3,5 x 30 mm	30	10
MTL0400	Screw Driver Handle		1
MTL0525	Screw Driver Bit	Hex 2,5	2
MTL0235	Drill Guide	For Ø3,5 Screw	1
MTL0330	Drill Bit	Ø3,0mm	2
MQC0000	Container	240x160x42	1

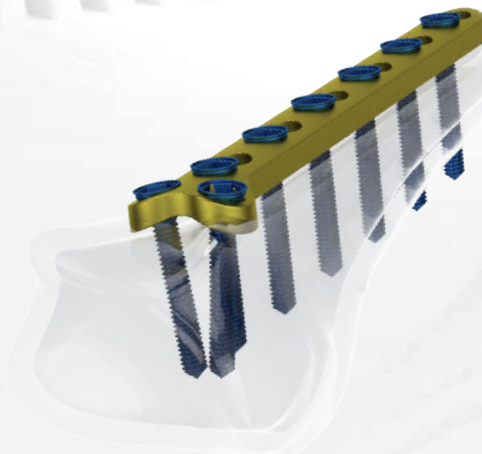


04 QUINCY Maxi Set

T Combi-hole Plate



- ❖ For use with Ø3.5 mm locking&non locking cortical screws
- ❖ Has a special design with angled locking technology with the possibility of using two locking cortical screws side by side
- ❖ Offers the possibility of using either locking cortical screw or dynamic compression in the special LCP hole
- ❖ Especially designed for rarely proximal and distal long bones humerus, tibia fractures, especially distal radius fractures union and problematic fractures in small dogs
- ❖ 6-hole, thickness: 3,5mm, length:105mm



QUINCY Maxi Set 04

LC-DCP Plate

- ❖ For use with Ø3.5 mm locking&non locking cortical screws
- ❖ Fully anatomically designed for long bones; humerus, tibia, femur etc. fractures
- ❖ Have special design that provide two-way dynamic compression when using a locked cortical screw two dynamic compression holes in the center allow dynamic compression in both directions in the same hole
- ❖ Off-center locked non locking cortical screw holes are of great importance as they provide the strongest stabilization of this size
- ❖ (6, 8, 10, 12)-hole, thickness: 3,5mm, length:(105, 125, 145, 165)mm

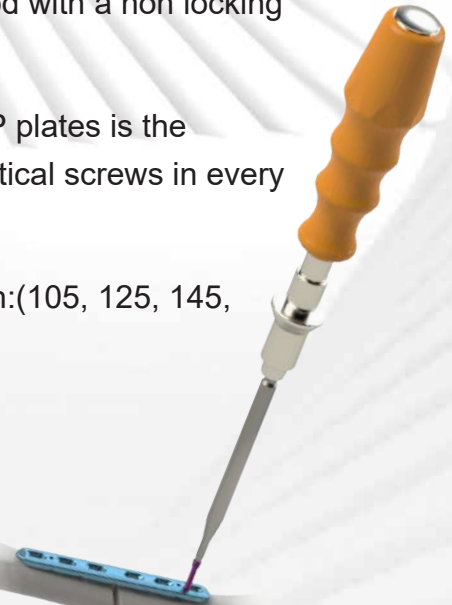


04 QUINCY Maxi Set

LC Combi-hole Plate



- ❖ For use with Ø3.5 mm locking & non locking cortical screws
- ❖ Designed for long bone fractures of dogs; : humerus, femur, tibia etc.
- ❖ Allows the use of possibility locked or dynamic compression (non locking cortical screw) in the same hole
- ❖ When using an angled non locking cortical screw, it offers the possibility of using an angled setting method with a non locking cortical screw in the hole
- ❖ The most important difference from LC DCP plates is the possibility of setting angled non locking cortical screws in every hole
- ❖ (6, 8, 10, 12)-hole, thickness: 3,5mm, length:(105, 125, 145, 165)mm



QUINCY Maxi Set 04

Reconstruction Plate

- ❖ For use with Ø3.5 mm locking cortical screws
- ❖ Have special designed gaps that offer the advantage of easier and angled bending
- ❖ Provides strong stabilization with locking cortical screw
- ❖ It can be used any fractured surface of the bone, femur, humerus, radius/ulna, tibia etc.
- ❖ It is a special design that offers excellent results in hip fractures and jaw fractures in small animals
- ❖ (4, 5, 6, 7, 8, 9, 10)-hole, thickness: 3,5mm, length:(47, 59, 71, 83, 96, 109, 122)mm



04 QUINCY Maxi Set

Locking & Non Locking Cortical Screws

- **Ø3.5 mm Locking Cortical Screw**



- ❖ For use with T Combi-hole, LC-DCP, LC Combi-hole, Reconstruction,
- ❖ In order to straighten the driving, Hex 2.5 System is used
- ❖ For best locking of the plate, double pitch and angled head is used
- ❖ Length:(14, 16, 18, 20, 22, 24, 26, 28, 30)mm

- **Ø3.5 mm Non Locking Cortical Screw**



- ❖ For with T Combi-hole, LC-DCP, LC Combi-hole,
- ❖ In order to straighten the driving, Hex 2.5 System is used
- ❖ For best locking of the plate, double pitch and angled head is used
- ❖ Spherical design in the head of non locking screws fulfil
- ❖ Length:(20, 22, 24, 26, 28, 30)mm

Surgical Motors 08

NOW WITH 3000 MAH SONY LITHIUM ION BATTERIES

NO OTHER SURGICAL MOTOR BRANDS HAVE 3000 Mah CAPACITY LITHIUM BATTERIES.

Reliable and High Performance with Japanese Makita Technology Inside. Low Noise and vibration level Cannulated Drill High speed: ≤ 1.350 rpm Oscillating Saw Speed: ≤ 16.000 cpm Voltage: AC220V/50Hz Sensitive trigger with High speed drilling, Low speed drilling, screw driving and tapping. Torque limiting for screw driving. Warranty: Motors with 1-year and lion batteries with 3-month warranty.

Host part

Parameter Category		No-Load speed	Frequency	Maximum Torque	5 Minutes Temperature	Noise
		rpm	Hz	N.m	°C	dB
BSF-SD	Bone drill	0-1350		≥ 3	≤ 25	≤ 75
	Reamer drill	0-300		≥ 3	≤ 25	≤ 75
	Oscillating Saw		0-16000		≤ 25	≤ 75
BSF-SD	AO Drill	0-1350		≥ 3	≤ 25	≤ 75
	Reamer	0-300		≥ 3	≤ 25	≤ 75
BSF-SS	Sternum Saw	0-16000	0-16000		≤ 25	≤ 75

S SERIES CANNULATED SURGICAL DRILL & SAW SET

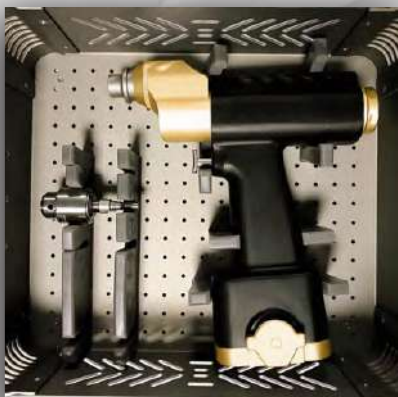


Batter & Charger

Host	Voltage,	5.76 V Q ~ 17.28V
	power	$\geq 150W$
Charger	Input voltage	100V ~ 240V
	Input power	50Hz ~ 60Hz
	Input current,	0.5A (max)
	Output voltage,	7.2V ~ 14.4V
	Output current	1.0A (max)
Battery	Voltage	5.76V ~ 17.28V
	Charging time	$\approx 1H$
	Discharge time / 1A	≥ 30 min

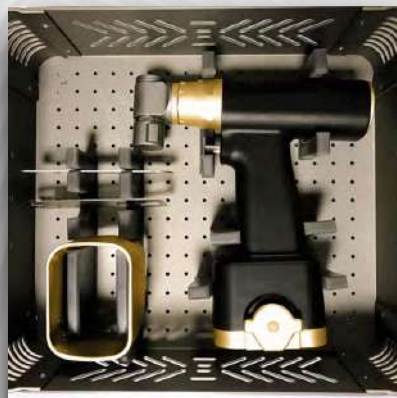
08 Surgical Motors

S SERIES CANNULATED SURGICAL DRILL SET



- ❖ One cannulated drill unit
- ❖ One lithium ion charger
- ❖ Two 3000 Mah Lithium ion batteries
- ❖ Two aseptic battery transfer rings
- ❖ One drill chuck and key
- ❖ One Aluminium case

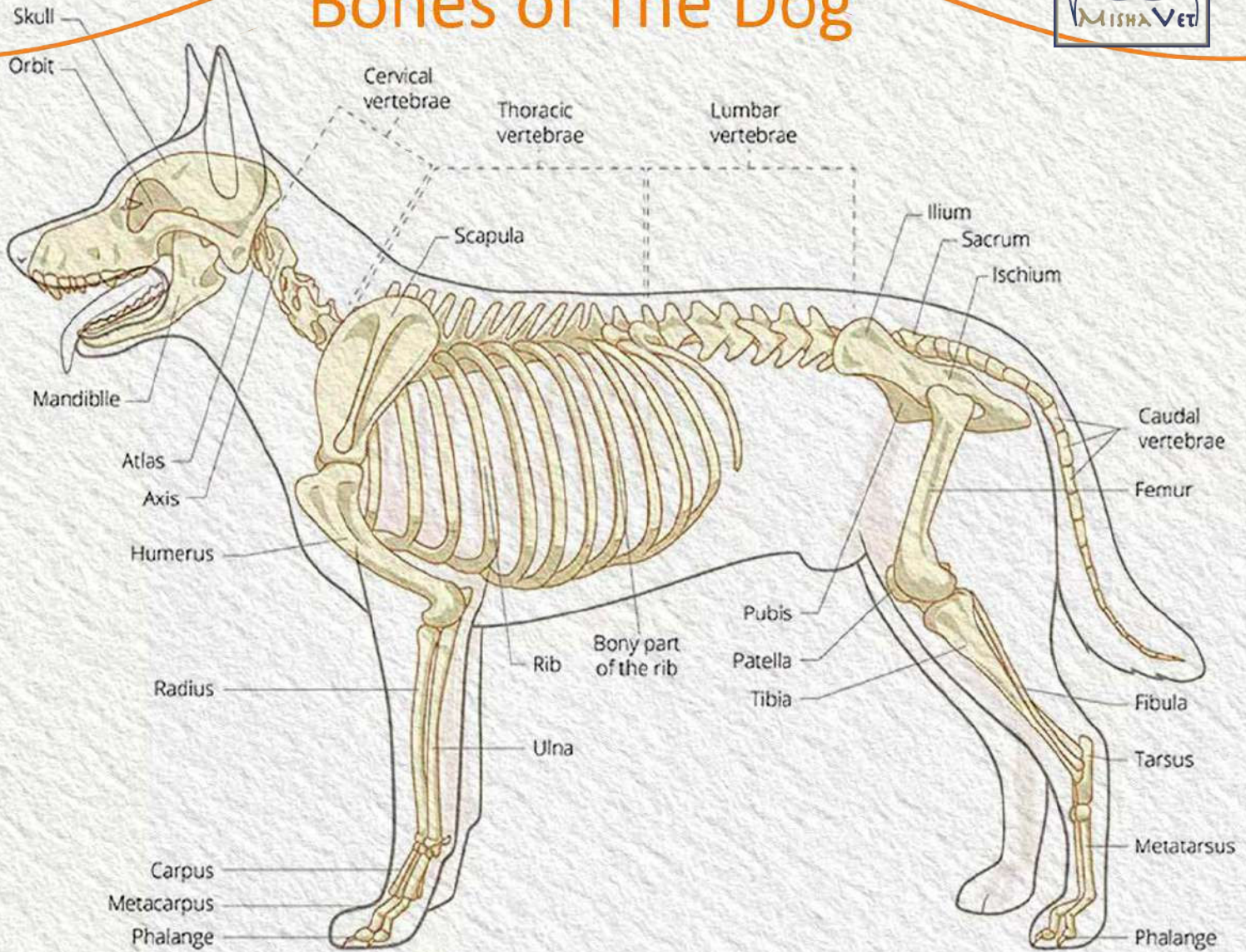
S SERIES SURGICAL SAW SET



- ❖ One saw unit
- ❖ One charger
- ❖ Two 3000 Mah Lithium ion batteries
- ❖ Two aseptic battery transfer rings
- ❖ Four saw blades
- ❖ One Aluminium case

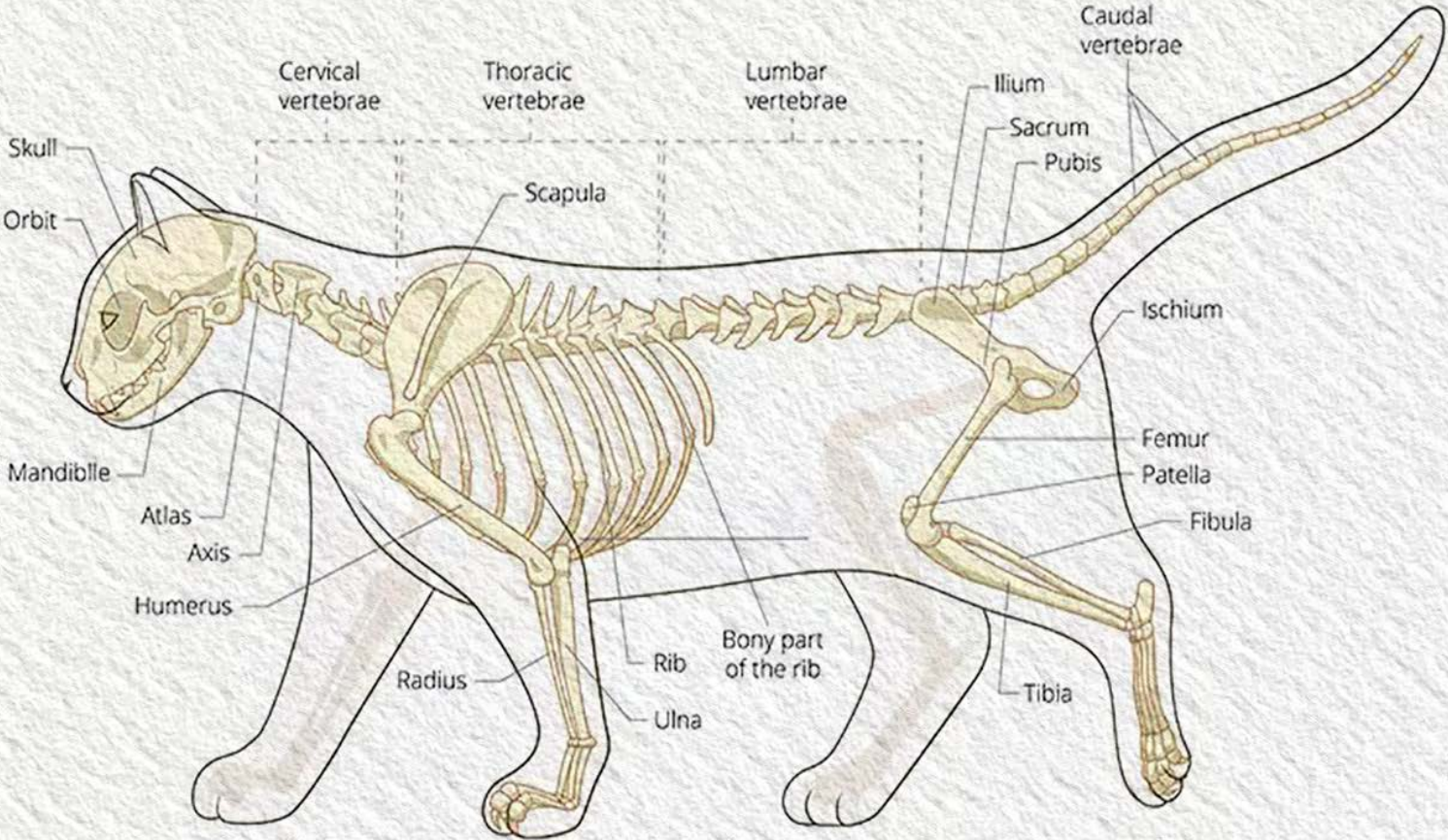


Bones of The Dog



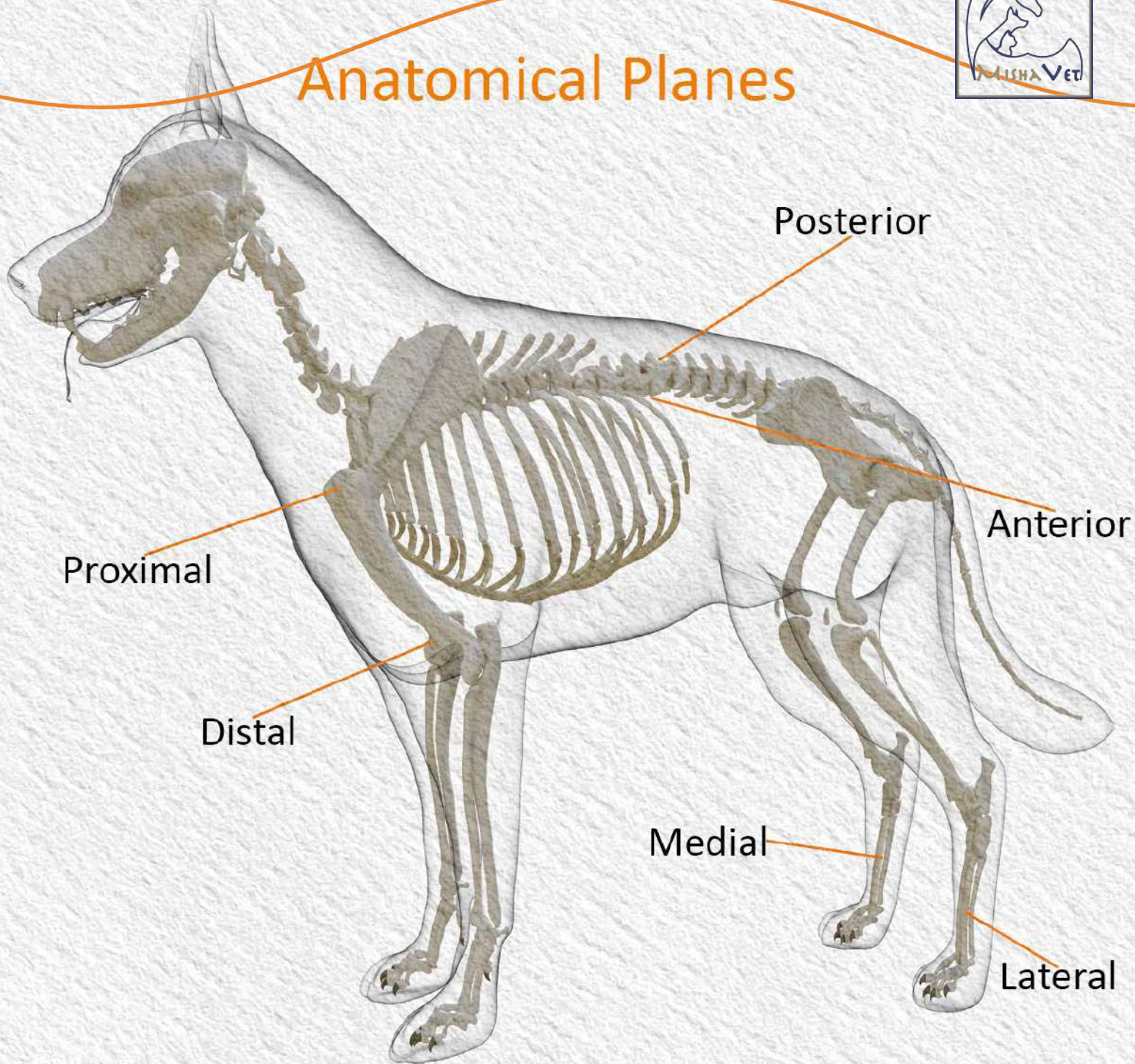


Bones of The Cat





Anatomical Planes





Who we are

We have nearly 40-year of combined experience in machining, and insight for the production of our medical products to treat a variety of injuries and conditons in medical sector. We fulfill the requirements of ISO 13485 and manufacturing of medical implants (Veterinary Spine&Trauma Solutions).

Our goal

Our main goal is to do our best to satisfy every customer who benefits of our products and services. We aim to do that by providing them timely, useful, and the best solutions.

info@mishavet.com
www.mishavet.com



Exclusive Distributor
Contactenos

WELLGO S. DE R.L. DE C.V.
Insurgentes Sur 2453
Torre Murano Piso. 6, Oficina. 6087
Tizapán San Ángel
Teléfono: 55 8014 8107, 55 5470 0857
Correo: ventas@wellgomexico.com
www.wellgomexico.com