



**MISHA VET**

Orthopedic &  
Spinal Implants &  
Instruments

"Premum, Non Nocere!"  
"First, Do Not Harm!"




[www.mishavet.com](http://www.mishavet.com)

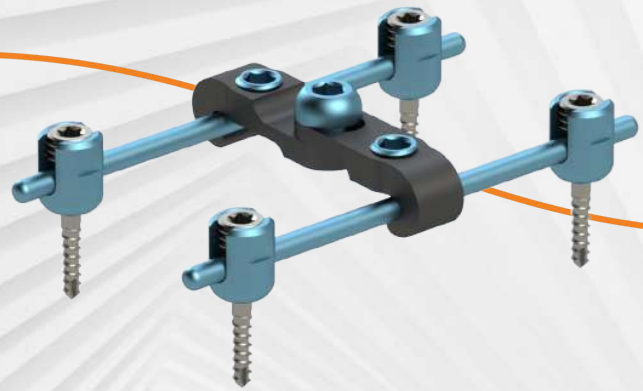
# Introduction



MishaVet as a veterinary trauma and spinal products company is committed to maintaining the highest ethical, quality and compliance standards while meeting our customers' demands for surgical products;

- **Easy-to-use Solutions**
  - **Enhanced Support**
  - **Excellent Outcome**
- 

# Overview



MishaVet is committed to providing customers with excellent quality products and superior customer service.

Our company conducts business in an open and honest manner and rejects business practices that unnecessarily increase the cost of health treatment.

MishaVet's products fulfill the requirement of ISO 13485. Our Quality Management System carries out all the necessary follow-ups at all levels of our products.

MishaVet's products have been placed in quality on domestic and international markets.

MishaVet's veterinary products that provide comprehensive medical solutions to help veterinarians treat patients successfully. Our products portfolio includes technically advanced implants and instruments:

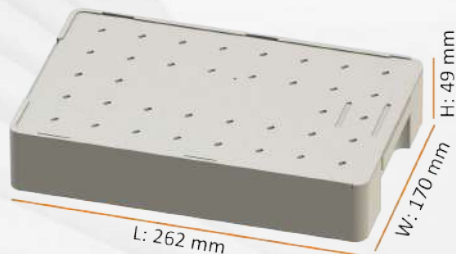
- **100% Titanium(Ti6Al4V Grade 5) Plates and Screws**
- **Sturdy Screwdriver bits are made of quality stainless steel**
- **Carefully engineered sets, implants and instruments**

Our company regularly trains appropriate Team Members on its legal and ethical obligations and MishaVet's policies and procedures related to marketing and promotional activities related to MishaVet's products. We regularly review and update our training programs as needed.

# TRACY TTA Set 05

## Tracy TTA Set Features

- ❖ For a small animals, breed or older ones, TTA (Tuberositas Tibia Advancement) is the easiest and the most preferred method among the extra capsular methods
- ❖ TTA Set is created to provide surgeons with real benefits to reduce iatrogenic damage to the bone, lower the risk of infection, speed the incorporation of the implant into the bone, ease pes anserinus reconstruction, reduce start-up, carrying and overall costs, shorten surgery time, and deliver consistent execution with predictable outcomes.
- ❖ All the most needed large size cages from 3.0mm to 15.0mm are available in the TTA set. TTA set contains screwdriver, drill, plates, cages, saw guide, separator to open the bone without breaking, and spacer that is required to intervene in patellar luxation together with cruciate ligament rupture
- ❖ Portable, only 2,90 kg, with dimensions: 262x170x49 mm



# 05 TRACY TTA Set

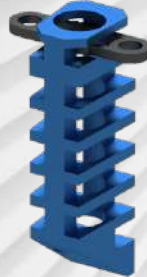
## Tracy TTA Set Implants



3.0 TTA Cage



4.5 TTA Cage



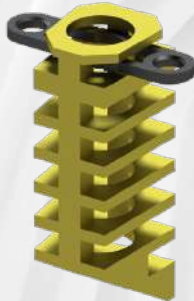
6.0 TTA Cage



TTA Plate, R/L



7.5 TTA Cage



9.0 TTA Cage



10.5 TTA Cage



Spacer



12.0 TTA Cage



13.5 TTA Cage



15.0 TTA Cage



Ø2.0/2.4/2.7 Non-Locking Screw

# TRACY TTA Set 05

## Tracy TTA Set Implants

Code	Description	Hole/Size (Ea)/(mm)	Width (mm)	Thickness (mm)	Qty in Set (EA)
MTC0310	TTA Implant	3	6	10	1
MTC0313	TTA Implant	3	6	13	1
MTC0316	TTA Implant	3	6	16	1
MTC0319	TTA Implant	3	6	19	1
MTC4513	TTA Implant	4,5	7	10	1
MTC4513	TTA Implant	4,5	7	13	1
MTC4516	TTA Implant	4,5	7	16	1
MTC0613	TTA Implant	6	8	13	1
MTC0616	TTA Implant	6	8	16	1
MTC0619	TTA Implant	6	8	19	1
MTC0622	TTA Implant	6	8	22	1
MTC7516	TTA Implant	7,5	8	16	1
MTC7519	TTA Implant	7,5	8	19	1
MTC7522	TTA Implant	7,5	8	22	1
MTC0916	TTA Implant	9	10	16	1
MTC0919	TTA Implant	9	10	19	1
MTC0922	TTA Implant	9	10	22	1
MTC0925	TTA Implant	9	10	25	1
MTC1019	TTA Implant	10,5	10	19	1
MTC1022	TTA Implant	10,5	10	22	1
MTC1025	TTA Implant	10,5	10	25	1
MTC1219	TTA Implant	12	10	19	1
MTC1222	TTA Implant	12	10	22	1
MTC1225	TTA Implant	12	10	25	1
MTC1228	TTA Implant	12	10	28	1
MTC1322	TTA Implant	13,5	10	22	1
MTC1325	TTA Implant	13,5	10	25	1



# 05 TRACY TTA Set

## Tracy TTA Set Implants

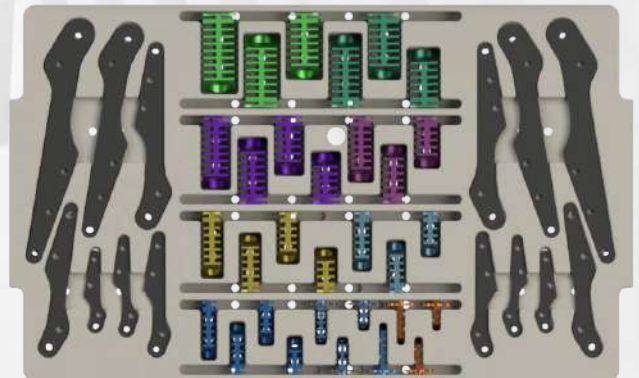
Code	Description	Hole/Size (Ea)/(mm)	Width (mm)	Thickness (mm)	(EA)
MTC1328	TTA Implant	13,5	10	28	1
MTC1525	TTA Implant	15	10	25	1
MTC1528	TTA Implant	15	10	28	1
MTC1531	TTA Implant	15	10	31	1
MTC2020	Spacer	Ø2,0		2	5
MTC2040	Spacer	Ø2,0		4	5
MTC2060	Spacer	Ø2,0		6	5
MTC2420	Spacer	Ø2,4		2	5
MTC2440	Spacer	Ø2,4		4	5
MTC2460	Spacer	Ø2,4		6	5
MTC2720	Spacer	Ø2,7		2	5
MTC2740	Spacer	Ø2,7		4	5
MTC2760	Spacer	Ø2,7		6	5
MTC0101	TTA Plate, Right	1		35	1
MTC0102	TTA Plate, Right	1		42	1
MTC0103	TTA Plate, Right	1		52	1
MTC1501	TTA Plate, Right	1,5		65	1
MTC1502	TTA Plate, Right	1,5		78	1
MTC2001	TTA Plate, Right	2		91	1
MTC2002	TTA Plate, Right	2		104	1
MTC0111	TTA Plate, Left	1		35	1
MTC0112	TTA Plate, Left	1		42	1
MTC0113	TTA Plate, Left	1		52	1
MTC1511	TTA Plate, Left	1,5		65	1
MTC1512	TTA Plate, Left	1,5		78	1
MTC2011	TTA Plate, Left	2		91	1
MTC2012	TTA Plate, Left	2		104	1



# TRACY TTA Set 05

## Tracy TTA Set Screws and Instruments

Code	Description	Hole/Size (Ea)/(mm)	Qty in Set (EA)
MSN2006	Non-Locking Cortical Screw, 2,0 x 6 mm	6	5
MSN2008	Non-Locking Cortical Screw, 2,0 x 8 mm	8	5
MSN2010	Non-Locking Cortical Screw, 2,0 x 10 m	10	5
MSN2010	Non-Locking Cortical Screw, 2,0 x 12 mm	12	5
MSN2014	Non-Locking Cortical Screw, 2,0 x 14 mm	14	5
MSN2016	Non-Locking Cortical Screw, 2,0 x 16 mm	16	5
MSN2018	Non-Locking Cortical Screw, 2,0 x 18 mm	18	5
MSN2020	Non-Locking Cortical Screw, 2,0 x 20 mm	20	5
MSN2410	Non-Locking Cortical Screw, 2,4 x 10 mm	10	5
MSN2412	Non-Locking Cortical Screw, 2,4 x 12 mm	12	5
MSN2414	Non-Locking Cortical Screw, 2,4 x 14 mm	14	5
MSN2416	Non-Locking Cortical Screw, 2,4 x 16 mm	16	5
MSN2418	Non-Locking Cortical Screw, 2,4 x 18 mm	18	5
MSN2420	Non-Locking Cortical Screw, 2,4 x 20 mm	20	5
MSN2422	Non-Locking Cortical Screw, 2,4 x 22 mm	22	5
MSN2424	Non-Locking Cortical Screw, 2,4 x 24 mm	24	5
MSN2710	Non-Locking Cortical Screw, 2,7 x 10 mm	10	5
MSN2712	Non-Locking Cortical Screw, 2,7 x 12 mm	12	5
MSN2714	Non-Locking Cortical Screw, 2,7 x 14 mm	14	5
MSN2716	Non-Locking Cortical Screw, 2,7 x 16 mm	16	5
MSN2718	Non-Locking Cortical Screw, 2,7 x 18 mm	18	5
MSN2720	Non-Locking Cortical Screw, 2,7 x 20 mm	20	5
MSN2722	Non-Locking Cortical Screw, 2,7 x 22 mm	22	5
MSN2724	Non-Locking Cortical Screw, 2,7 x 24 mm	24	5
MSN2726	Non-Locking Cortical Screw, 2,7 x 26 mm	26	5
MSN2728	Non-Locking Cortical Screw, 2,7 x 28 mm	28	5
MSN2730	Non-Locking Cortical Screw, 2,7 x 30 mm	30	5
MTL0400	Screw Driver Handle		1
MTL0520	Screw Driver Bit	2,0 HEX	1
MTL0508	Screw Driver Bit	T8 TORX	1
MTL0315	Drill Bit	Ø1,5	1
MTL0320	Drill Bit	Ø2,0	1
MTL0322	Drill Bit	Ø2,25	1
MTL0600	Saw Guide		1
MTL0701	Seperator	3-6	1
MTL0702	Seperator	4,5-9	1
MTL0703	Seperator	7,5-15	1
MTL0800	Holder		1
MTC0000	Container		1



# Surgical Motors 08

**NOW WITH 3000 MAH SONY LITHIUM ION BATTERIES**

**NO OTHER SURGICAL MOTOR BRANDS HAVE 3000 Mah CAPACITY LITHIUM BATTERIES.**

Reliable and High Performance with Japanese Makita Technology Inside. Low Noise and vibration level Cannulated Drill High speed:  $\leq 1.350$  rpm Oscillating Saw Speed:  $\leq 16.000$  cpm Voltage: AC220V/50Hz Sensitive trigger with High speed drilling, Low speed drilling, screw driving and tapping. Torque limiting for screw driving. Warranty: Motors with 1-year and lion batteries with 3-month warranty.

Host part

Parameter Category		No-Load speed	Frequency	Maximum Torque	5 Minutes Temperature	Noise
		rpm	Hz	N.m	°C	dB
BSF-SD	Bone drill	0-1350		$\geq 3$	$\leq 25$	$\leq 75$
	Reamer drill	0-300		$\geq 3$	$\leq 25$	$\leq 75$
	Oscillating Saw		0-16000		$\leq 25$	$\leq 75$
BSF-SD	AO Drill	0-1350		$\geq 3$	$\leq 25$	$\leq 75$
	Reamer	0-300		$\geq 3$	$\leq 25$	$\leq 75$
BSF-SS	Sternum Saw	0-16000	0-16000		$\leq 25$	$\leq 75$

## S SERIES CANNULATED SURGICAL DRILL & SAW SET

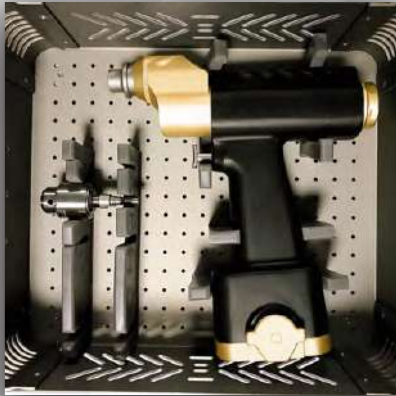


### Batter & Charger

Host	Voltage,	5.76 V Q ~ 17.28V
	power	$\geq 150W$
Charger	Input voltage	100V ~ 240V
	Input power	50Hz ~ 60Hz
	Input current,	0.5A (max)
	Output voltage,	7.2V ~ 14.4V
	Output current	1.0A (max)
Battery	Voltage	5.76V ~ 17.28V
	Charging time	$\approx 1H$
	Discharge time / 1A	$\geq 30$ min

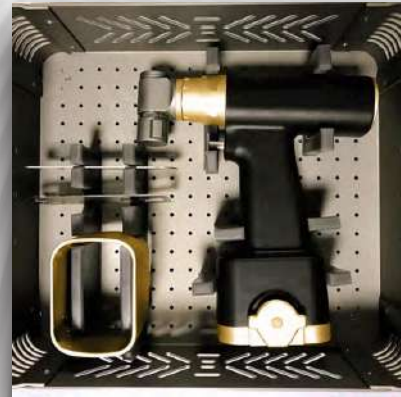
# 08 Surgical Motors

## S SERIES CANNULATED SURGICAL DRILL SET



- ❖ One cannulated drill unit
- ❖ One lithium ion charger
- ❖ Two 3000 Mah Lithium ion batteries
- ❖ Two aseptic battery transfer rings
- ❖ One drill chuck and key
- ❖ One Aluminium case

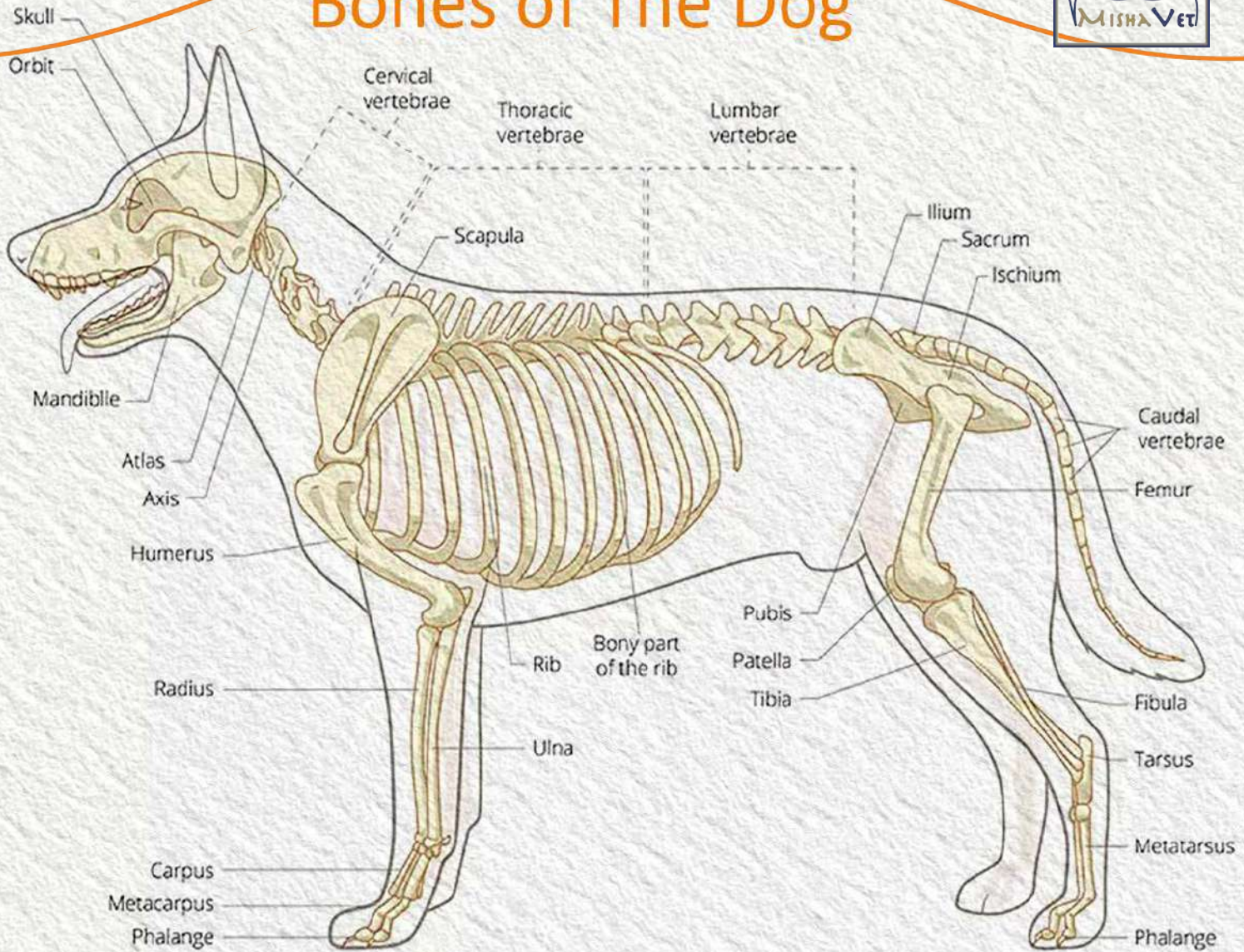
## S SERIES SURGICAL SAW SET



- ❖ One saw unit
- ❖ One charger
- ❖ Two 3000 Mah Lithium ion batteries
- ❖ Two aseptic battery transfer rings
- ❖ Four saw blades
- ❖ One Aluminium case

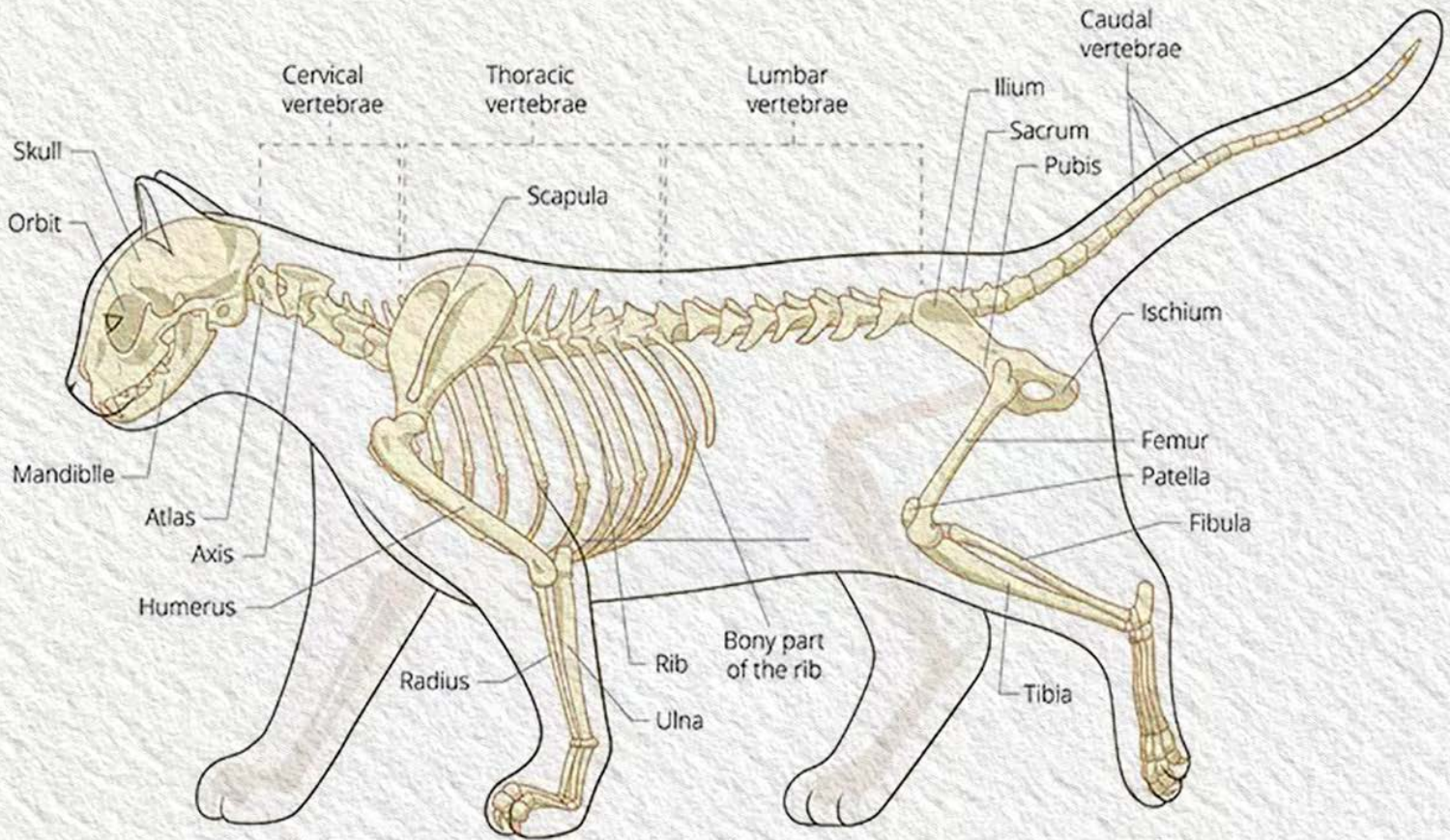


# Bones of The Dog



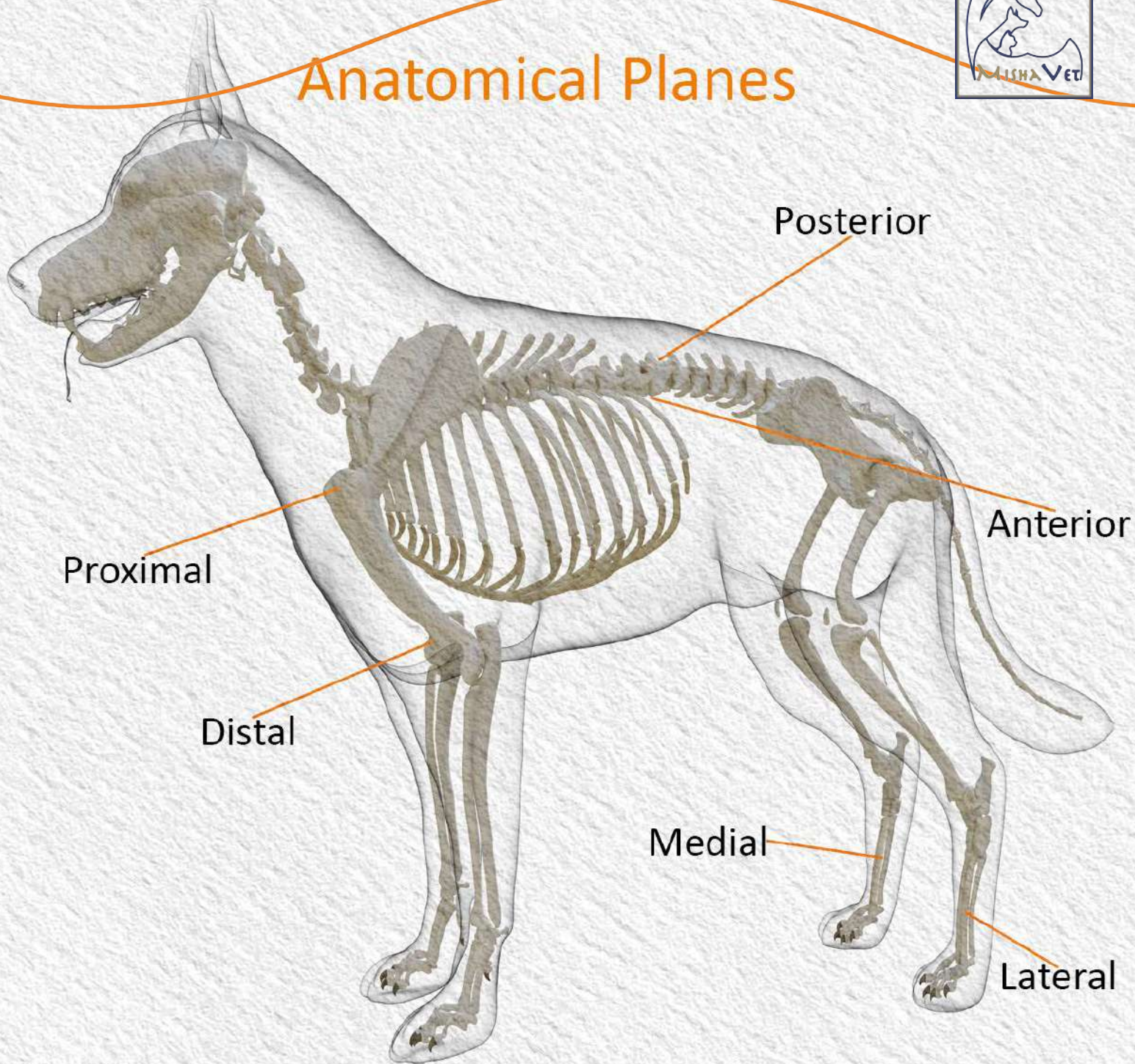


# Bones of The Cat





# Anatomical Planes





## Who we are

We have nearly 40-year of combined experience in machining, and insight for the production of our medical products to treat a variety of injuries and conditons in medical sector. We fulfill the requirements of ISO 13485 and manufacturing of medical implants (Veterinary Spine&Trauma Solutions).

## Our goal

Our main goal is to do our best to satisfy every customer who benefits of our products and services. We aim to do that by providing them timely, useful, and the best solutions.

info@mishavet.com  
www.mishavet.com



**Exclusive Distributor**  
Contactenos

WELLGO S. DE R.L. DE C.V.  
Insurgentes Sur 2453  
Torre Murano Piso. 6, Oficina. 6087  
Tizapán San Ángel  
Teléfono: 55 8014 8107, 55 5470 0857  
Correo: ventas@wellgomexico.com  
www.wellgomexico.com